

RE Spring Bulletin 2020



COVENTRY SACRE

Standing Advisory Council on Religious Education



Warwickshire SACRE

Standing Advisory Council on Religious Education



Key Dates for RE Festivals Spring 2020

Religious Tradition/Worldview	Key Dates
Baha'i	19 th January World Religion Day 20 th March Naw-Ruz 20 th April to 1st May Ridvan
Buddhism	16 th January Shinran Mem. Day 25 th January Honen Mem. Day 25 th -27 th January Losar 8 th /15 th February Parinirvana /Nirvana Day 9 th February Magha Puja* 8 th April Hanamatsuri 13 th -15 th April Songkran
Christianity	6 th January Epiphany [Anglican/RC] 6 th January Theophany [Orthodox] 6 th /7 th Christmas Eve/Day [Orthodox] 12 th January Baptism of Christ [Anglican] 12 th January Baptism of the Lord [RC] 19 th Theophany [Orthodox] (Julian Calendar) 2 nd February Presentation of Christ in the Temple /Candlemas 25 th February Shrove Tuesday 26 th February Ash Wednesday 26 th February - April 11 th Lent 2 nd March Great Lenten Fast begins [Orthodox] 19 th March St Joseph 22 nd March Mothering Sunday 25 th March The Annunciation [Anglican/Orthodox/RC] 29 th March Passion Sunday 5 th April Palm Sunday 5 th -11 th April Holy Week 9 th April Maundy Thursday 10 th April Good Friday 11 th April Holy Saturday 12 th April Easter Day 19 th April Pascha [Orthodox]
Hinduism	12 th January Birthday of Swami Vivekananda 14 th /15 th January Lohri / Makar Sankranti / Pongal *29 th /30 th January Sarasvati Puja /Vasant Panchami 21 st February Mahashivratri 9 th /10 th March Holi 2 nd April Rama Navami 7 th /8 th April Hanuman Jayanti
Islam	22 nd March The Prophet's Night Journey and Ascent into Heaven [Isra and Mi'raj] 8 th April The Night of Forgiveness [Lailat-ul Bara'ah]
Judaism**	10 th February Tu B'Shevat 9 th -10 th March Purim 9 th -16 th April Passover /Pesach
Sikhism	2 nd /13 th January Birthday of Guru Gobind Singh 9 th /10 th February Basant / Vasant 10 th 11 th March Hola Mohalla 14 th April Vaisakhi/ Baisakhi
Other	1 st January New Year's Day /Hogmanay 19 th January World Religion Day 27 th January Holocaust Mem. Day 1 st March St David's Day 17 th March St Patrick's Day 23 rd April St George's Day

*Some uncertainty about the date**All Jewish festivals begin the night before at sundown

Locating SACRE RE Resources

COVENTRY SACRE
Standing Advisory Council on Religious Education



Warwickshire SACRE
Standing Advisory Council on Religious Education



SACRE Website

Please remember the Warwickshire SACRE site is the place where both Coventry and Warwickshire schools can access the Coventry and Warwickshire Agreed Syllabus and additional units of work:

<https://www.warwickshire.gov.uk/sacresources>

You will also find the following resources on this website:

-
- SACRE Suggested List of RE Visitors and Places of Worship for RE Visits
 - RE and Climate Change Resources for running a project in school with a debate included (in conjunction with Rugby Inter Faith Forum)
 - Previous RE Bulletins
 - Previous RE Subject Leader Twilight materials (Autumn 2018: Peace and Remembrance; Spring 2019: RE and Assessment; Summer 2019: RE and the Arts)
 - New to RE Subject Leadership CPD materials (with Ofsted Framework considerations 2019)
 - RE Curriculum CPD materials (also linked with Ofsted Framework 2019)
 - Any new materials as they are produced and materials for any sessions we hold in 2019-2020 (including a 'RE Curriculum' presentation coming soon)
 - **Brand new section where our RE Subject Knowledge Enhancement materials will be housed. These include film clips for teacher CPD for use in schools and a 'Road Map' document with suggested resources and teaching approaches for each featured tradition. The focus religions for 2019-20 are: Sikhism, Islam and Judaism (see below for further information).**
-

Local RE CPD Opportunities



RE Subject Leader Twilights

We have two new twilight sessions for RE leaders in Coventry & Warwickshire for Spring Term 2020. Book now so you don't miss out.

If your **curriculum intent** involves developing **critical thinkers**, this may be the session for you:



<p>Thursday 23rd January 2020 4.30-6.00pm</p>	<p>Pound Lane Learning Centre, Leamington Spa, Warwickshire CV32 7RT</p> <p>Booking through Eventbrite https://www.eventbrite.com/e/74260303567</p>	<p>RE Curriculum Session: Philosophy & Ethics in RE</p> <p>Primary & Secondary (split session with Alice Thomas from Southam College)</p>
---	---	--

If your **curriculum intent** involves ensuring all pupils are **readers**, this may be the session for you:



Thursday 13th February 2020 4.30-6.00pm	<p>Friargate – Room M1.3 Station Square, Coventry West Midlands, CV1 2FL</p> <p>Booking through Eventbrite https://www.eventbrite.com/e/74260654617</p>	<p>RE Curriculum Session: ‘Theologies of Reading’: approaches to sacred texts and using reading in RE</p> <p>Primary & Secondary</p>
---	---	---

You are welcome to attend both sessions.

Westhill
make things happen

Warwickshire SACRE
Standing Advisory Council on Religious Education

COVENTRY SACRE
Standing Advisory Council on Religious Education



Coventry and Warwickshire SACRE RE Subject Knowledge Enhancement Project

Venue	Date	Religious Tradition*
Nuneaton Mosque	Thursday 5 th March 2020 4.00-6.00pm	Islam
Birmingham Progressive Synagogue	Tuesday 16 th June 2020 5.00-7.00pm (to allow for travel)	Judaism

FREE CPD SESSIONS. Book on to remaining 2 sessions now using Event Brite links below! First come, first served.

Feedback from 1st session on Sikhism:

Talk Content: 100% Excellent

Tour Content: 100% Excellent

Organisation: 100% Excellent

Really useful and well-organised event- lovely to have follow up materials as well.

Absolutely everything- thank you so very much for this opportunity.

Islam: <https://www.eventbrite.com/e/sacre-re-subject-knowledge-islam-tickets-72923013697>

Judaism: <https://www.eventbrite.com/e/sacre-re-subject-knowledge-judaism-tickets-72934716701>

- Each session is held in a place of worship
- Tour of place of worship with key features and links to practices pointed out
- Talk by relevant SACRE member to give a basic overview of the faith
- Q&A session (as needed)
- Filming by a professional filmographer so that the tour and talk can be used back in school for staff meetings and CPD (as short film clips)
- 'Road Map' suggesting approaches and resources to be used back in school for teaching that tradition/worldview

Certificates of Attendance for RE Subject Leadership file as evidence you have been intentional about developing your subject knowledge.



DO NOT MISS

These sessions are free and will provide you with good RE subject knowledge.



New RE Curriculum

We are looking to hear from any schools that have already revamped their RE curriculum in light of the new Ofsted framework and would like to share their curriculum journey with others. Please email Jennifer Jenkins: Jennifer.Jenkins@coventry.gov.uk
jenniferjenkins@warwickshire.gov.uk

Diocesan Board of Education Offer for RE Leads

In 2020 SACRE and DBE continue to run RE Subject Leader Sessions on the same day and at the same venue, so you only need to come out of school once.

The DBE are making their CPD sessions **available to all schools**, not just CE schools, as a further way of spreading CPD locally. These sessions run at a cost of **£25** for non-church schools. There will likely be an element of church school distinctiveness to these sessions but they will also provide valuable CPD on a range of subjects. **YOU MUST BOOK ON TO THIS SESSION AND THE SACRE SESSION SEPARATELY.**

RE and Church School Development Meetings

Cost: *free place for DSA subscribers*

Venue: *to be advised on booking*

Dates: *Thursday 19 September 2019, 1.30pm to 4.00pm*

Thursday 23 January 2020, 1.30pm to 4.00pm

Tuesday 09 June 2020, 1.30pm to 4.00pm



Run by Fiona
Moss of RE
Today

These termly events provide an opportunity for RE Leaders and those responsible for Church School Distinctiveness to meet together. Delegates will receive local and national updates, share good practice and resources. As well as RE, these sessions will also cover elements of SMSC including collective worship. It is a wonderful opportunity to network with other professionals and to be inspired in your practice.

To book a place contact: CoventryDBE@CovCofE.org or call 01788 422800

Diocesan Board of Education, Craven Road, Rugby CV21 3JZ www.dioceseofcoventry.org/dbe

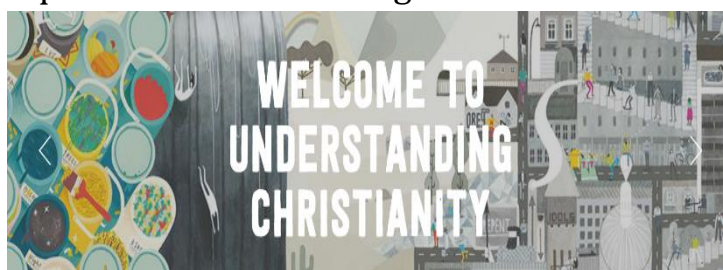
Fiona intends to run sessions based on the following:

Spring Term Session: Teaching about Hinduism

Summer Term Session: Assessment, Moderation and Pupil Progress

If you are a community school interested in the excellent *Understanding Christianity* resource to support your RE curriculum, please email CoventryDBE@CovCofE.org at the DBE to enquire about UC Training in 2019-2020.

<http://www.understandingchristianity.org.uk/>





Experience Pentecost Teacher CPD

Thursday 12th March
2020 at Coventry
Cathedral 2-4pm

Canon Kathryn Fleming from Coventry Cathedral will lead you through how to set up and use a series of stations to allow your pupils to 'Experience Pentecost'. This is suitable for Primary teachers but could easily be adapted for use in Secondary schools.

This event will include a tour of the cathedral.

Cost £20 per delegate.

Book on to the event here:

<https://www.eventbrite.co.uk/e/experience-pentecost-tickets-84887299197>



For more information about this and Coventry Cathedral's school tours, please contact the schools' team on 02476 521 257 or email:

stella.timbrell@coventrycathedral.org.uk



Primary 'Peace and Reconciliation' Complimentary Units

Some brand new 'Peace and Reconciliation' units for Primary have been developed in conjunction with Coventry Cathedral and offer a chance for schools to bring a local flavour to their RE curriculum. The lessons can be incorporated into, or substituted for, lessons/activities in the existing Coventry and Warwickshire RE Syllabus unit of work, as the teacher sees fit, to bring a peace and reconciliation theme to your RE. Use as many units as you like to meet your school's needs.

COVENTRY CATHEDRAL
Coventry and Warwickshire Religious Education Agreed Syllabus

Peace and Reconciliation

Key Stage 1
Key Question: 1.3 Who is Jewish and what do they believe?

The following lessons can be incorporated into, or substituted for, lessons/activities in the existing Coventry and Warwickshire RE Syllabus unit of work, as the teacher sees fit, to bring a peace and reconciliation theme to your RE.

Strand / Religions	Learning outcomes (intended to enable pupils to achieve end of key stage outcomes):	Suggested content for learning linked with peace and reconciliation:
Strand: Believing Judaism	<ul style="list-style-type: none"> Make links between some Jewish teachings and how Jewish people live (A2 Exceeding). 	<ul style="list-style-type: none"> Explore the Jewish festivals of Yom Kippur and P' Hashanah (https://www.bbc.co.uk/news/round/2016-10-01-jewish-festivals) with a focus on forgiveness. Forgiveness is a commandment for Jews and they regard it as merciful.

COVENTRY CATHEDRAL
Coventry and Warwickshire Religious Education Agreed Syllabus

Peace and Reconciliation

Key Stage 2
Key Question: 2.4 Why do people pray?

The following lessons can be incorporated into, or substituted for, lessons/activities in the existing Coventry and Warwickshire RE Syllabus unit of work, as the teacher sees fit, to bring a peace and reconciliation theme to your RE.

Strand / Religions	Learning outcomes (intended to enable pupils to achieve end of key stage outcomes):	Suggested content for learning linked with peace and reconciliation:
Strand: Expressing Christianity	<ul style="list-style-type: none"> Describe ways in which prayer can challenge and comfort believers (B2 Exceeding) Consider and evaluate the significance of prayer in the lives of people today (A1 Exceeding) 	<ul style="list-style-type: none"> Introduce pupils to the Library of Reconciliation as a prayer originating from Coventry Cathedral. Explain the prayer is structured around the seven deadly sins' (see here for an overview: https://www.bbc.com/news/religion-2016-07-01). Use the reflective story to encourage reflection on the Library. Are there parts of the prayer that only Christians would want to pray? What has...?

COVENTRY CATHEDRAL
Coventry and Warwickshire Religious Education Agreed Syllabus

Peace and Reconciliation

Key Stage 1
Key Question: 2.8 What does it mean to be a Hindu in Britain today?

The following lessons can be incorporated into, or substituted for, lessons/activities in the existing Coventry and Warwickshire RE Syllabus unit of work, as the teacher sees fit, to bring a peace and reconciliation theme to your RE.

Strand / Religions	Learning outcomes (intended to enable pupils to achieve end of key stage outcomes):	Suggested content for learning linked with peace and reconciliation:
Strand: Living Hinduism	<ul style="list-style-type: none"> Discuss links between the actions of Hindus in helping others and ways in which people of other faiths and beliefs, including pupils themselves, help others (C2 Expected). 	<ul style="list-style-type: none"> Explore the work of Mahatma G of peace, focusing on his story a (see Powerpoint resource). Write out / with images taken from tods from the internet. Ask pupils to simplify the can Hindus learn from f anyone, Hindu or not, practice! Extension work: C which Ghandi's tr other civil rights Junior (USA) ar

COVENTRY CATHEDRAL
Coventry and Warwickshire Religious Education Agreed Syllabus

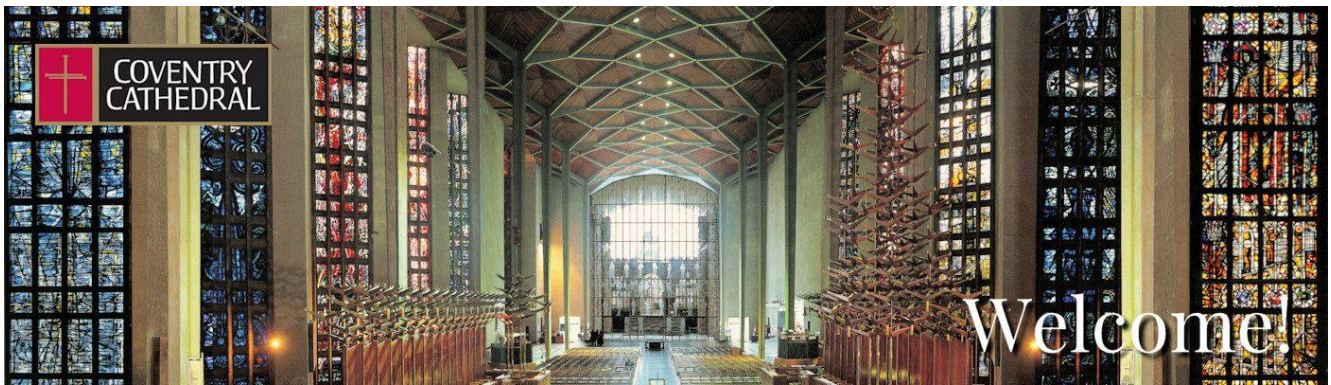
Peace and Reconciliation

Key Stage 1
Key Question: 1.5 What makes some places sacred?

The following lessons can be incorporated into, or substituted for, lessons/activities in the existing Coventry and Warwickshire RE Syllabus unit of work, as the teacher sees fit, to bring a peace and reconciliation theme to your RE.

Strand / Religions	Learning outcomes (intended to enable pupils to achieve end of key stage outcomes):	Suggested content for learning linked with peace and reconciliation:
Strand: Expressing Christianity Islam Judaism	<ul style="list-style-type: none"> Identify special objects and symbols found in a place where people worship and be able to say something about what they mean and how they are used (A3 Expected). Talk about ways in which stories, objects, symbols and actions used in churches show what people believe (B2 Expected) 	<ul style="list-style-type: none"> Make a visit to Coventry Cathedral and explore the signs and symbols linked with peace and reconciliation. How do these symbols link with the cathedral's story? You can book a CPR (Conflict, Peace & Reconciliation) Tour or a Signs and Symbols Tour here: http://www.coventrycathedral.org.uk/visit/school-tours-programme/ If a visit is not possible, use the accompanying Powerpoint resource (with QR codes) to explore and reconciliation. Introduce the prayer below that was said in the cathedral to commemorate the arrival of the Kiel Candle Stand. The Global Candle Stand (German: <i>Globaler Kerzenstand</i>) was given to Coventry Cathedral by students from the 'RZ Technik' as a gift on 12 June 2016. The Global Candle Stand holds 56 tea lights in memory of the London Bombings. On 7 July 2005 one

These can be found on the Warwickshire SACRE website under Section 2 (SACRE Additional Units): <https://i.warwickshire.gov.uk/content/sacre-education-resources/sacre-education-resources>



Coventry Cathedral are developing their own teaching resources and these can be found on their website here:

<http://www.coventrycathedral.org.uk/wpsite/teacher-resources/>

Information about how to book Schools tours and workshops can be found here: <http://www.coventrycathedral.org.uk/wpsite/planning-your-visit/>

Or by emailing Stella.Timbrell@CoventryCathedral.org.uk

.....

Local CPD Opportunities in 2020

 A poster for a course titled 'TRUE ISLAM COURSE'. The background shows a bookshelf and an open book. The text on the poster includes:

- TRUE ISLAM COURSE**
- SIX WEEKLY LESSONS
- BEGINS TUESDAY 21ST JANUARY
- 7.00pm - 8.00pm
- COURSE CONTENT**
 - Origin & Beliefs of Islam
 - Misconceptions about Islam such as Jihad & Women's Rights
 - Islamic Moral Philosophy
 - Rationality, Science & Islam
 - Life of the Holy Prophet Muhammad^ﷺ
- To Register contact**
leamingtonspa@ahmadiyya.org.uk
- Venue**
Baitul Ehsan, Riverside, Off Adelaide Road, Leamington Spa, CV32 5AH
- Logo for 'LOVE FOR ALL PLAYED FOR NONE' and 'AHMADIYYA MUSLIM COMMUNITY'



AREIAC: Deep Dive or Shallow Swim: From Syllabus to Classroom
Monday 6th to Tuesday 7th July, 2020
Windmill Village Hotel: Coventry



The 2020 conference will take place on 6th and 7th July 2020 at the Windmill Village Hotel, Coventry.

<http://areiac.org.uk/public/conf20/conf2020.html>



Course and event booking

Unpacking the Holocaust, Coventry



Friday 31 January 2020
Coventry

Our workshops update teachers' own knowledge and build confidence in teaching this complex and emotive subject. All our teacher training is free, thanks to funding from the Department for Education and Pears Foundation. You will leave with access to a wealth of effective and engaging classroom resources.

Full day CPD 'Unpacking the Holocaust'

<https://www.holocausteducation.org.uk/courses/2020/01/unpacking-holocaust-coventry/>

National RE Resources and Support

Primary RE 1000 Project with RE Today

Giving primary schools access to high-quality RE resources

The National Association of Teachers of RE (NATRE) has received generous funding to support more primary schools with high quality RE resources. Helping to deliver RE in engaging and exciting ways, Primary RE 1000 offers a special two year Bronze membership package.

Only available to eligible schools, NATRE aims to increase access to fantastic resources, and this funding has made it possible at a subsidised price. If you would like to find out if your school is eligible please email me: Jennifer.Jenkins@coventry.gov.uk (Coventry schools) or jenniferjenkins@warwickshire.gov.uk (Warwickshire schools). If you **ARE** eligible, I can send you a discount code and you will need to quote me as your referrer in order to get the discounted offer. More details on this project can be found here: <http://www.natre.org.uk/membership/primary-re-1000/>



twitter 
CHAT



For those of you who have a Twitter account

#REchatUK is every first Monday of the month 8-9pm.

Just use the hashtag and join in.

Each chat has a specific RE focus.

Just search for #REChatUK and join in the conversation using the hashtag for all your tweets.

Top Tip:
Following key RE accounts on Twitter keeps you up-to-date with what is happening in the world of RE.
Recommended accounts:
@NATREupdate
@IFWeek
@NATREspiritarts
@CommisiononRE
@Ben_Wood_RE
@REQualityMark
@reonline_tweets
@RECouncil
@NASACRE
@fionajmoss



RE Comments in Ofsted Reports since September 2019

NATRE have gathered together RE comments from Ofsted reports so far this academic year. You can find them here: <http://www.natre.org.uk/news/latest-news/101-re-mentions-in-ofsted-primary-and-secondary-reports/>

There are some examples of comments made where RE has been selected as a focus subject for the inspection. As you can see from this preview though, RE-related comments are being made even when RE is NOT picked as a subject for a 'Deep Dive'.



Phase	Overall effectiveness	What does the school do well and what does it need to do better?	What does the school need to do to improve?	Date
1. Primary	Good	Pupils in Year 5 spoke thoughtfully about how the mix of pupils with different ethnic backgrounds in the school enriches their religious education.		1-2 October 2019 Not a Deep Dive
2. Secondary	Requires Improvement	All pupils study religious education. This demonstrates the leaders' commitment to the school's values. The teaching of religious education supports pupils' personal development well. Pupils learn about other faiths and the importance of tolerance and respect.	The curriculum provides pupils with three years to study GCSE courses. Consequently, the time available for younger pupils to study some subjects is limited.	1-2 October 2019 Not a RE Deep Dive
3. Primary	Good	Leaders and governors put pupils' welfare at the centre of everything they do. They set high standards for all pupils. Pupils learn about different cultures, traditions and religions. In assemblies and lessons, pupils learn about the importance of showing respect to everyone. This is underpinned by the school's values and ethos.		2-3 October Not a RE Deep Dive
4. Primary	Good	Pupils learn about other religions and cultures and understand the need for tolerance and kindness.		9-10 October Not a RE Deep Dive
5. Primary	Good	Pupils learn history, geography, religious education and other foundation subjects through a combined		24-25 September Not a RE Deep Dive

If you missed our RE Curriculum session in October 2019, you can access all the resources here: <https://i.warwickshire.gov.uk/content/sacre-education-resources/sacre-education-resources>

Autumn Term 2019 - RE Curriculum

- [Curriculum Takeaway Document](#)
- [Literacies within Religious Education](#)
- [RE Curriculum October 2019](#)
- [Tell Me 5 Revision in RE](#)
- [Thinking about RE Concepts](#)
- [Using Dunlosky Learning Strategies for RE revision](#)
- [Using Rosenshine's Principles of Instruction in RE Lessons](#)

Farmington Scholarships

Current application window closes on January 26th 2020.



The aim of the Farmington Institute is to support and encourage teachers of Religious Education in schools and Head teachers working on values and standards.

The Institute awards Scholarships to UK based teachers of Religious Education and associated subjects and Head teachers, publishes papers and reports, and arranges conferences.

What type of Scholarships are available?

Scholarships are divided into two types: university-based and school/homebased. Teachers who live within a reasonable distance of one of the selected universities or colleges, may be awarded a university-based Scholarship.

University based Scholarships awarded may be taken in the form of day release up to 30 days, the Scholarships to be taken within university terms. The academic facilities of the universities/colleges are available for Scholars.

Teachers awarded school/home-based Scholarships will be assigned a Farmington Tutor. The Scholarship may be taken in the form of day release, for instance for one day a week over a term or over the year, or for continuous periods up to a maximum of 30 days.

During the period of the Scholarship, there will be regular tutorials and at least one visit to the Farmington Institute.

Scholars are required to attend the Scholars' Conference before their Scholarship and the Conference after their Scholarship. Scholars who are still teaching RE will be invited to all subsequent conferences.

The 2020 Conference will take place from 6pm on Friday 26th June, to 2.30pm on Sunday 28th June 2020. The 2021 Conference will take place from Friday 25th June to Sunday 27th June 2021.

Applications

Application forms can be obtained by emailing:

farmington@hmc.ox.ac.uk

or by visiting our website at www.farmington.ac.uk

The closing date for applications for the academic year 2020 – 2021 is Sunday 26th January 2020.

Applicants may be asked to come for interview by the Selection Board. Interviews for Scholarships will take place in February – April 2020.

Our selected universities/colleges are:

Bath: Bath Spa University (Study of Religions Department)

Belfast: Queen's University Belfast, St Mary's University College and Stranmillis University College

Cambridge: University of Cambridge, Faculty of Education/Homerton College

Durham: St Chad's College, University of Durham

Exeter: University of Exeter (School of Education)

Glasgow: University of Strathclyde (Faculty of Education)

Lampeter/Carmarthen: University of Wales Trinity Saint David

Lincoln: Bishop Grosseteste University

Liverpool: Liverpool Hope University and Liverpool John Moore University

Norwich: University of East Anglia

Warwick: University of Warwick (Religions and Education Research Unit)

York: York St John University

Who is eligible?

The Scholarships are for teachers of Religious Education in UK secondary schools, primary school RE Co-ordinators, or other primary school teachers involved in teaching RE and associated subjects, and teachers of children with Special Educational Needs who are involved with RE. Head teachers who wish to undertake research into either Religious Education or Values Education are also eligible to apply. Applicants should have held their present post for at least two years.

Enquiries

Further information about the Farmington Institute, its Scholarships and the work of previous Scholars is to be found on the Farmington website: www.farmington.ac.uk.

Other enquiries should be addressed to:

Kay Webb
Administrator
The Farmington Institute
Harris Manchester College
Mansfield Road
Oxford
OX1 3TD

Telephone: 01865 271985
Email: farmington@hmc.ox.ac.uk



FARMINGTON INSTITUTE
HARRIS MANCHESTER COLLEGE
UNIVERSITY OF OXFORD

Which subjects?

Scholars are free to study any aspect of Religious Education they wish, but preference will be given to applicants whose work can be seen to be of direct value to the teaching of RE in schools. Occasionally, the Institute, in conjunction with one of its partner universities or colleges, may advertise for an RE teacher to undertake research on a specific topic which is relevant to RE.

How much will it cost?

The Scholarship will cover the cost of tuition, essential local travel and, by negotiation with the school, the salary of a replacement teacher up to point 6 of the main pay scale.

What is required of Scholars?

All Scholars are expected to produce an outline study plan of their project, which must be sent to the Farmington Institute before the start of their Scholarship. Towards the end of the Scholarship, the Scholar will give a presentation on their work at the university/school and again at our 2021 conference. All Scholars are expected to produce a written report on the work they have undertaken, which must be sent to the Farmington Institute on completion of the Scholarship.



FARMINGTON INSTITUTE
HARRIS MANCHESTER COLLEGE
UNIVERSITY OF OXFORD

FARMINGTON SCHOLARSHIPS

for Teachers and Head teachers of Religious Education and associated subjects

Academic Year 2020- 2021

Now open to Secondary and Primary School teachers, teachers of RE to children with Special Educational Needs, and Head teachers

<http://www.farmington.ac.uk/>

Jerusalem Trust RE Grants

The Jerusalem Trust's Small Grants to Schools Scheme

Resourcing the teaching of Christianity within Religious Education

Grants of up to **£600** available!



£31,560 Granted in the last 60 days!



Recently purchased items include:

- Youth bibles and Good News bibles
- Christianity artefacts
- KS3 Christianity textbooks
- Teacher RE Planning: Christianity
- Animated Bible Stories DVD



<http://www.regrants.org.uk/>

LIBRARY
HSILIRB

Search our website
 Our website Main Catalogue

Discovering Sacred Texts

Home Themes Articles Collection items Videos Teaching resources About the project Terms of use

Explore the sacred texts of the world's great faiths

Discovering Sacred Texts provides access to the richness and diversity of the texts from some of the world's greatest faiths. Discover more about the sacred texts from Buddhism, Christianity, Hinduism, Islam, Judaism, Sikhism and the Baha'i Faith, Jainism and Zoroastrianism.

Search Discovering Sacred Texts

<https://www.bl.uk/sacred-texts>

Jewish Britain: A History in 50 Objects

[Home](#) » [Collections](#) » [Online collections](#) » [Jewish Britain: A History in 50 Objects](#)

Jewish Britain: A History in 50 Objects showcases highlights from the collections of the Jewish Museum London. Each object tells a story about the history of the Jewish community in Britain from medieval to modern times.

The Jewish Museum was founded in 1932 and in 1994 it merged with the former London Museum of Jewish Life on a two-site basis. In 2007, both sites closed in preparation for a major capital redevelopment project and the new museum reopened in March 2010, bringing all the collections together for the first time. We hold around 28,000 objects, including a Judaica (ceremonial art) collection and a social history collection covering subjects such as the East End, refugees from Nazism and the Holocaust.

This exhibition has been produced as part of the Judaica Europeana project, which is co-funded by the European Commission under the eContentplus programme, as part of the i2010 policy.

Search

In this section

> [Collections](#)

> [Image Library](#)

<https://jewishmuseum.org.uk/collections/online-collections/jewish-britain-a-history-in-50-objects/>

Discover Islamic Art

[Permanent Collection](#)
[Database](#)
[Exhibitions](#)
[Artistic Introduction](#)
[Partners](#)
[Timeline](#)
[Learn with MWNF](#)
[My Collection](#)

- [Recommended Links](#)
- [Credits](#)
- [Mission Statement](#)
- [Visit Explore Islamic Art Collections](#)



Today's highlight from the Permanent Collection

Silk textile with geometric pattern
Hegira 8th–9th / AD 14th–15th century, Nasrid
Woven silk textile

<http://islamicart.museumwnf.org/>



<https://compassion-matters.org/>

ASSEMBLIES } for all





PROVIDING FREE ACCESS TO HIGH QUALITY, INCLUSIVE ASSEMBLIES

ABOUT

EXPLORE

DONATE

BROWSE THE ASSEMBLIES

<p>ALL ASSEMBLIES</p> <p>233</p> 		<p>KEY DATES AND EVENTS</p> <p>255</p> 		
<p>THEMES</p> <p>30</p> 		<p>ORGANISATIONS</p> <p>51</p> 		
<p>KEY STAGE 1</p> <p>100</p>	<p>KEY STAGE 2</p> <p>148</p> <p>7 – 11</p>	<p>KEY STAGE 3</p> <p>121</p> <p>11 – 14</p>	<p>KEY STAGE 4</p> <p>74</p> <p>14 – 16</p>	<p>KEY STAGE 5</p> <p>32</p> <p>16 – 18</p>

<https://assembliesforall.org.uk/themes/>

<https://assembliesforall.org.uk/>

Education Resources

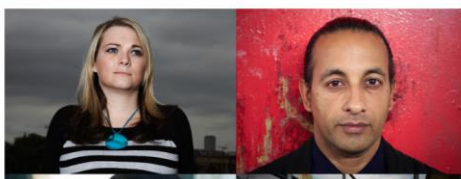
[What we offer](#) | [Education Programme](#) | [Education Resources](#)

The Forgiveness Project has developed Education Resources for the use of schools, colleges, pupil referral units and other organisations to explore forgiveness and related concepts with young people aged 14+.

“ I used to teach a junior/senior Ethics elective course and stumbled upon this website. Ten years later, I’m still using it. ”

— Ginger Lewis, Teacher

Philosophy for Children



Stories of Forgiveness



<https://www.theforgivenessproject.com/education-resources>

Summer Term RE Bulletin



Next RE bulletin due out in April/May 2020. If you have anything you think would be useful to share with Coventry and Warwickshire RE teachers, please email me to let me know: Jennifer.Jenkins@coventry.gov.uk (Coventry Schools)

jenniferjenkins@warwickshire.gov.uk (Warwickshire schools)



We are always on the lookout for model RE policies and model RE long term curriculum plans to share as examples with schools. If you would like to share either of these with SACRE, please do get in touch.



COVENTRY SACRE
Standing Advisory Council on Religious Education



Warwickshire SACRE
Standing Advisory Council on Religious Education



Both SACREs are looking for additional teacher representation. If you would be interested in joining your local SACRE (Standard Advisory Council for Religious Education) please email LUCY.LAMBERT@coventry.gov.uk (Coventry) or janebennett@warwickshire.gov.uk (Warwickshire) to register your interest.



Two upcoming SACRE surveys:

- Secondary School RE Exam Entries
- Coventry & Warwickshire Agreed Syllabus Review (2 years since launch)