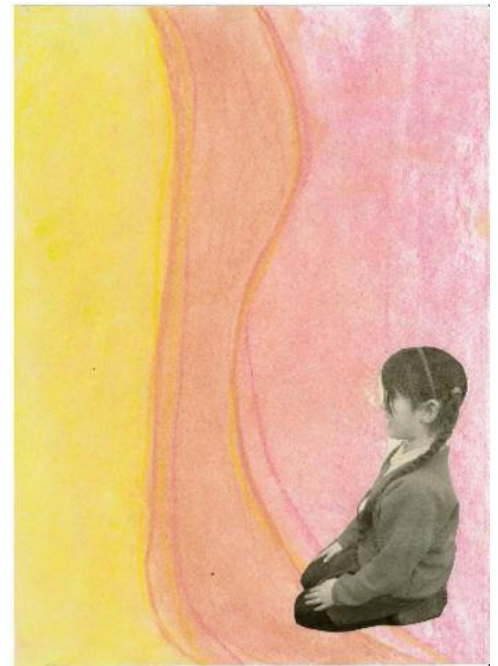




Introducing the *new* Coventry and Warwickshire Agreed Syllabus 2017



Planning *great* RE

Achieving *more* in RE

Spiritual *development*

Developing questioning

Making *progress* in RE

Agreed Syllabus for RE launch Events

Introducing the new Coventry and Warwickshire Agreed Syllabus

Making the most of RE: better teaching, better learning

Monday 3rd July 2017 at The Welcome Centre, Coventry
Monday 10th July 2017 at The Christian Centre, Bedworth
Monday 11th July 2017 at Stratford-upon-Avon Racecourse

9.30am-3.15pm
(Registration and refreshments from 9.00 am)



This one-day conference will introduce teachers to the new Coventry and Warwickshire Agreed Syllabus. It will focus on practical classroom ideas and strategies, enabling teachers to get to grips with the new syllabus and how to apply it in their schools.

8.45 Registration and refreshments

9.30-11.00 Planning great RE using the new syllabus

This session will consider the place and value of RE for pupils, highlighting the developments and opportunities in the new syllabus. It will demonstrate how to use the syllabus to plan and teach engaging, thoughtful RE

Break - refreshments

11.30-1.00 Excellent teaching and learning

This session will offer at least six high quality teaching and learning ideas, based on the syllabus, to deepen pupils' understanding and skills, and promote spiritual development.

Lunch

2.00-3.15 More Excellent teaching and learning and Achieving more in RE- Separate sessions for Primary and Secondary

This session will look at methods of assessment and provide examples of ways to enable pupils to make good progress in RE.

On the day, you will receive a hard copy of the syllabus, plus samples of exemplar schemes of work. Copies of all resources used on the day will be available to take away. A wide range of resources will be available to purchase or order on the day including a full set of scheme of work to support this syllabus. ***Please see over the page for cost details of purchasing the full schemes of work.***

Who is it for?

The conference is aimed at teachers of RE from primary and Secondary schools, including subject leaders, Heads of RE, HLTAs and head teachers.

Aims

- To introduce the new Coventry and Warwickshire Agreed Syllabus for RE, with its increased flexibility and extra support for planning RE.
- To provide practical strategies, guidance and resources for teachers and subject leaders in planning creative, challenging, thoughtful RE to promote the personal development of pupils
- To inspire teachers and help them to develop their confidence in planning and delivering RE, whether in the context of cross-curriculum themes, RE days or discrete RE lessons.
- To model examples of thoughtful RE, challenging all pupils and promoting deeper thinking.

For ticket information and to book your place please see below:

Coventry Event: <https://www.eventbrite.co.uk/e/coventrywarwickshire-agreed-syllabus-for-re-launch-coventry-tickets-34278235124>

Bedworth Event: <https://www.eventbrite.co.uk/e/coventrywarwickshire-agreed-syllabus-for-re-launch-bedworth-tickets-34316626955>

Stratford Event: <https://www.eventbrite.co.uk/e/coventrywarwickshire-agreed-syllabus-for-re-launch-stratford-upon-avon-tickets-34316796462>

Full Schemes of Work

RE Today have developed a complete Scheme of Work for all of the key questions, to exemplify excellent teaching and learning and support you in your classroom practice. Schools that order the Schemes of Work on the day of one of the launch events or by 21.07.2017 will pay a reduced price. Please see below for details.

	Special Offer Launch Conference Price (for orders received on the day or by 21.7.17)	RRP
Primary SoW (31 units - full set)	£153	£264
Secondary SoW (12 units - full set)	£59	£102
Primary & Secondary SoW (43 units - full set)	£212	£366
First School (14 units - EY and KS1)	£69.10	£119.23
Junior School (17 Units - LKS2 and UKS2)	£83.90	£144.77
Middle School (20 units - UKS2 and KS3)	£97.44	£170.08
Primary/Secondary NATRE Silver Membership	-	£120
Primary/Secondary NATRE Bronze Membership	-	£75

For any queries please contact:

Coventry Event: lucy.lambert@coventry.gov.uk

Bedworth or Stratford Event: ruthwaterman@warwickshire.gov.uk

