



New to RE Subject Leadership Guidance

Welcome to RE Subject Leadership



So, you have been asked to lead RE? This is a good thing! Below are some helpful signposts to the things that will best support you in your new role.

My name is Jennifer Jenkins and I am employed jointly by both Coventry and Warwickshire local authorities on behalf of the two SACREs as RE Facilitator one day a week. I typically work Thursdays in this role and my responsibilities include:

- Writing and delivering high quality RE CPD
- Developing resources to support the current local Coventry and warwickshire Agreed Syllabus for RE (CWAS)
- Monitoring RE provision locally through the reading of Ofsted and SIAMS reports
- Conducting supportive SACRE monitoring visits in-person or via Teams
- Writing the new CWAS with a team of teachers

SACRE

SACRE stands for **Statutory Advisory Council for Religious Education**.

The SACRE has a statutory duty to:

- Advise Warwickshire County Council upon matters connected with religious worship in community schools and in foundation schools which do not have a religious character. Religious education in these schools is to be given in accordance with the Agreed Syllabus
- Advise Warwickshire County Council on teaching methods, choice of materials and teacher training in religious education and collective worship
- Produce an annual report
- Require Warwickshire County Council to review the locally agreed syllabus for religious education at least every five years.

SACRE websites

The Warwickshire SACRE website has a whole host of really useful documents and resources:

<https://schools.warwickshire.gov.uk/education-resources/standing-advisory-council-religious-education-sacre>

Contents

1. About SACRE

2. Collective worship

3. Education resources: Coventry and Warwickshire Agreed Syllabus

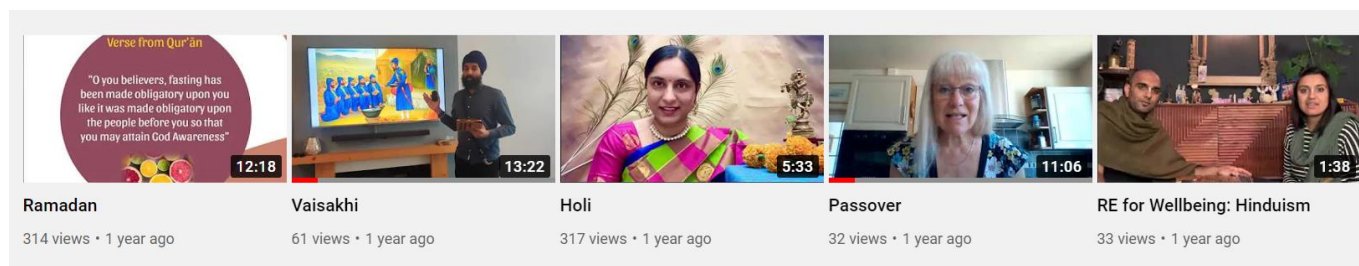
4. Education resources: Useful Resources and Updates

5. Education resources: RE Subject Leaders

6. Education resources: Westhill RE Subject Knowledge Enhancement Programme

Coventry SACRE host a YouTube channel with videos created by our SACRE members:

<https://www.youtube.com/channel/UCffPoYcgj0e3cpIRa0jmG6Q>



We are adding to this channel all the time and it will be an important resource for our next CWAS, due in 2024.

The Coventry & Warwickshire Agreed Syllabus (CWAS)

Coventry and Warwickshire
Agreed Syllabus for Religious Education
2017-2022



RE is not part of the National Curriculum but is instead the curriculum is decided locally. It is still a legal requirement to teach RE to all pupils. The current CWAS is an 'off-the-peg' RE Today syllabus which you can find here: <https://schools.warwickshire.gov.uk/education-resources/standing-advisory-council-religious-education-sacre/3> Please do note the personalised expectations on Page 2 of the syllabus though, setting out expectations for its use in our local context. **Do not share this syllabus on your school website as we do not have permission for that.**

Access the syllabus and all other documents on the SACRE website using the password: WCRESyllabus2017

This syllabus was due to run out in 2022 but, in light of the disruption of the pandemic, we have extended it for a further two years until July 2024. We will launch our new CWAS in the summer of 2024 ready for implementation from September 2024.

CPD

We host regular CPD for RE subject leaders via Microsoft Teams. These tend to be at least termly and address the local needs of RE teachers as well as national developments in the teaching of RE.

You will find presentation slides and resources from all of our prior CPD sessions here:

<https://schools.warwickshire.gov.uk/education-resources/standing-advisory-council-religious-education-sacre/5>



Two essential RE CPD sessions on the Warwickshire SACRE website to catch up on as a new RE subject leader are:

- **A Worldviews Approach to Teaching RE (Autumn 2021)**
- **Balanced, Multi-Disciplinary RE (January 2022)**

Some recordings of previous CPD are hosted on hidden pages within our Coventry SACRE YouTube Channel, such as these two:

[Worldviews approach to teaching RE](#)

[Knowledge Organisers for RE](#)

We will be updating the links on our 'Essential RE CPD' page hosted by Coventry LA, which is another way of accessing our growing CPD library (including slides/resources):

<https://www.coventry.gov.uk/downloads/download/7067/essential-cpd-for-re-subject-leaders-and-teachers-of-re>

You can also request a recording of any CPD from the past two years by emailing sacre@warwickshire.gov.uk

eventbrite

In response to a recent RE teacher survey, our CPD continues to be online, with the exception of some sessions held in places of worship. You will sign up via Event Brite and then receive the Teams invite closer to the training date. Follow Warwickshire SACRE on Event Brite here:

<https://www.eventbrite.com/o/warwickshire-and-coventry-sacre-30587405474>

New to RE Leadership

You will find a CPD session titled '**Help! I'm the RE Subject Leader**' (May 2021) with presentation slides and resources on the Warwickshire SACRE website:

<https://www.coventry.gov.uk/downloads/download/7067/essential-cpd-for-re-subject-leaders->

[and-teachers-of-re](#) This should offer you a good starting point for getting started with leading this important subject.

Useful Documents

There is a whole section on the Warwickshire SACRE website containing what we believe to be essential and very useful documents for new RE subject leaders. These include:

- SACRE Suggested List of Visits and Visitors for RE (with contact details)
- Guidance on RE visits
- Do and Don't documents for each of the 'Big Six' religions and Humanism
- Dual Coding in RE document
- Retrieval Practice in RE document

<https://www.coventry.gov.uk/downloads/download/7067/essential-cpd-for-re-subject-leaders-and-teachers-of-re>

RE Bulletins

We put out a new RE Bulletin every term, in the first week of the new term. This includes details of how to book on to upcoming CPD (via Event Brite), other opportunities for CPD (locally and nationally), national developments in the RE world and recommended resources and books.

We also send emails in-between bulletins when we come across great things that cannot wait for the next bulletin.

To receive these regular bulletins, email Jane or Lucy:

Jane Bennett: Clerk to SACRE for Warwickshire (janebennett@warwickshire.gov.uk)

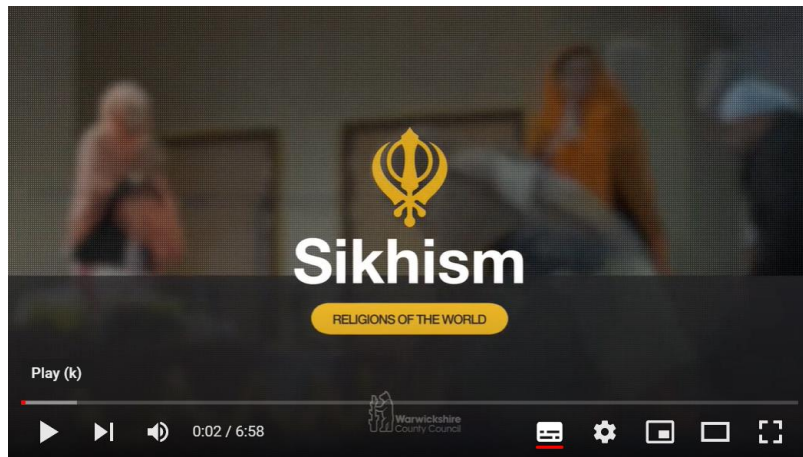
Lucy Lambert: Clerk to SACRE for Coventry (lucy.lambert@coventry.gov.uk)



RE Subject Knowledge

Coventry & Warwickshire have been lucky enough to have had a RE Subject Knowledge Programme funded by Westhill Charity which has produced some great short films, filmed locally in places of worship and led by SACRE members from different faith traditions. Several films are already available on this page of the Warwickshire SACRE website:

<https://schools.warwickshire.gov.uk/education-resources/standing-advisory-council-religious-education-sacre/6>






These 5-7 minute films are perfect for your own subject knowledge and also for sharing with staff. All six religions should be available by September 2022. You will also find the following documents:

- Guidance on how to use the films
- 'Road Maps' for each traditions suggesting resources and approaches for teaching that religion from EYFS to KS5
- Image Banks for each tradition



Culham St Gabriel's have also released some great free online training courses to help support RE subject leaders with their RE subject Knowledge: [Culham St Gabriel's Trust Moodle \(cstg.org.uk\)](https://www.culham-stgabriels.org.uk/moodle/)

<p>Introduction to Religion and Worldviews</p> <p>What is a Religion and Worldviews approach? Maybe you have heard the...</p> <p>0% Complete</p> 	<p>Introduction to Curriculum</p> <p>This course offers an understanding of what curriculum is and the central role it...</p> <p>0% Complete</p> 	<p>Introduction to Research</p> <p>This course is aimed at teachers as a general introduction to educational...</p> <p>0% Complete</p> 
---	--	---



RE Online also has some great support material for RE Subject Knowledge:

<https://www.reonline.org.uk/>



A subscription to NATRE is also a great way to support you as a new RE subject leader who is developing knowledge and expertise to lead the subject. You will receive a termly magazine with great articles in regarding RE teaching and a teaching resource book.

<https://www.natre.org.uk/>



OFSTED RE Research Report

An important recent report to be aware of is the Ofsted Research Report on RE which was published in May 2021: <https://www.gov.uk/government/publications/research-review-series-religious-education/research-review-series-religious-education>

This report builds on the Religious Education Council (REC)'s CORE Report from 2018: [Commission on Religious Education - The Religious Education Council of England and Wales](#) and the Worldviews Discussion Papers in 2020:

<https://www.religiouseducationcouncil.org.uk/projects/rec-discussion-papers-on-worldviews/>



SACRE Support for Schools

SACRE can offer a variety of support for you and your school in developing your RE provision:

Jennifer Jenkins RE Facilitator:

- Email support for RE subject leader queries
- SACRE supportive monitoring visits (online or in-person depending on enquiry)

- Ongoing creation and distribution of useful documents to support the CWAS
- Ongoing writing and delivery of CPD for RE subject leaders

SACRE members:

- In-person visits for RE lessons and assemblies
- Remote visits (Teams or Zoom) for input into part of an RE lesson (e.g. to interview)
- Inter-faith panels
- Email a question
- Videos on Coventry SACRE YouTube channel

If you have any questions as a new RE subject leader, or you just want to introduce yourself, please email Jennifer Jenkins:

jennifer.jenkins@coventry.gov.uk Coventry schools

jenniferjenkins@warwickshire.gov.uk Warwickshire schools

