

# RE Autumn Bulletin 2021



On behalf of Coventry and Warwickshire SACREs, welcome back to school to all staff and pupils! We continue to offer you support with your RE teaching and learning. Please contact [sacre@warwickshire.gov.uk](mailto:sacre@warwickshire.gov.uk) with any requests or queries. This bulletin is quite large- there is so much going on in the world of RE! Please contact me if you require any support:

[jennifer.jenkins@coventry.gov.uk](mailto:jennifer.jenkins@coventry.gov.uk) (Coventry Schools)

[jenniferjenkins@warwickshire.gov.uk](mailto:jenniferjenkins@warwickshire.gov.uk) (Warwickshire Schools)

## Key Dates for RE Festivals Autumn 2021

Religious Tradition/Worldview	Key Dates
<b>Baha'i</b>	6 <sup>th</sup> October The Birth of the Bab 7 <sup>th</sup> October The Birth of Baha'u'llah 25 <sup>th</sup> November Day of the Covenant 27 <sup>th</sup> November Ascension of Abdu'l-Bahá
<b>Buddhism</b>	19 <sup>th</sup> October Anapanasati Day (some uncertainty about the date) 20 <sup>th</sup> October Pavarana Day (some uncertainty about the date) 12 <sup>th</sup> November Loy Kratong 8 <sup>th</sup> December Bodhi Day
<b>Christianity</b>	September/October Harvest Festival [dates vary] 1 <sup>st</sup> November All Saints' Day 2 <sup>nd</sup> November All Souls' Day 28 <sup>th</sup> November Advent Sunday 8 <sup>th</sup> December Immaculate Conception [RC] 24 <sup>th</sup> December Christmas Eve 25 <sup>th</sup> December Christmas Day
<b>Hinduism</b>	10 <sup>th</sup> September Ganesh Chaturthi 2 <sup>nd</sup> October Gandhi Jayanti 6 <sup>th</sup> -14 <sup>th</sup> October Navaratri 11 <sup>th</sup> -15 <sup>th</sup> October Durga Puja 14 <sup>th</sup> -15 <sup>th</sup> October Dassehra 4 <sup>th</sup> November Divali / Deepavali
<b>Islam</b>	19 <sup>th</sup> October (Sunni)/ 24 <sup>th</sup> October (Shi'a) Birthday of the Prophet Muhammad [Milad un Nabi]
<b>Judaism*</b>	7 <sup>th</sup> – 8 <sup>th</sup> September Rosh Hashanah 16 <sup>th</sup> September Yom Kippur 21 <sup>st</sup> – 28 <sup>th</sup> October Sukkot 29 <sup>th</sup> October Simchat Torah 29 <sup>th</sup> November- 6 <sup>th</sup> December Hanukah
<b>Sikhism</b>	1 <sup>st</sup> September Installation of the Guru Granth Sahib in the Harmandir Sahib in Amritsar

	20 <sup>th</sup> October Conferring of Guruship on the Guru Granth Sahib in 1708 CE 4 <sup>th</sup> November Divali /Bandi Chhor Divas 19 <sup>th</sup> November Birthday of Guru Nanak 24 <sup>th</sup> November Martyrdom of Guru Tegh Bahadur
Other	29 <sup>th</sup> September Michaelmas 10 <sup>th</sup> – 17 <sup>th</sup> October Interfaith Week of Prayer for World Peace 7 <sup>th</sup> – 14 <sup>th</sup> November Interfaith Week 14 <sup>th</sup> November Remembrance Sunday 30 <sup>th</sup> November St Andrew's Day 10 <sup>th</sup> December Human Rights Day

\*All Jewish festivals begin the night before at sundown



## RE Subject Leader Twilights for 2021-2022

After conducting our survey, we have made the decision to continue RE Subject Leader Twilights via Microsoft Teams in 2021-2022. Use the Event Brite links to sign up for each session and you will then be sent the Teams joining link nearer the time of the session.

The Westhill Subject Knowledge Enhancement Programme sessions will be live in places of worship. Below are the sessions and the proposed dates as things currently stand. These dates are subject to Covid Guidance from the government and may need to change at short notice.

We have two major series for CPD: 'Lenses' and 'Academically Rigorous RE':

### SACRE RE Subject Leader

#### Twilight Sessions Autumn 2020/Spring 2021

Date	Format	Focus
Thursday 30 <sup>th</sup> September 2021 4.00-6.00pm	Microsoft Teams <a href="https://www.eventbrite.com/e/lenses-a-worldviews-approach-to-teaching-re-tickets-162664631291">https://www.eventbrite.com/e/lenses-a-worldviews-approach-to-teaching-re-tickets-162664631291</a>	Lenses: A Worldviews Approach to Teaching RE
Thursday 7 <sup>th</sup> October 2021 4.00-5.30pm	Microsoft Teams <a href="https://www.eventbrite.com/e/164960620657">https://www.eventbrite.com/e/164960620657</a>	Bespoke RE: Planning a Unit from the Agreed Syllabus

Thursday 21 <sup>st</sup> October 2021 4.00-6.00pm	Live session at local Hindu Mandir: Shree Krishna Temple Harnall Lane Coventry CV1 4EZ  <a href="https://www.eventbrite.com/e/re-subject-knowledge-hindu-traditions-tickets-164968444057">https://www.eventbrite.com/e/re-subject-knowledge-hindu-traditions-tickets-164968444057</a>	Westhill RE Subject Knowledge Programme: Hindu Traditions*
Thursday 11 <sup>th</sup> November 2021 4.00-6.00pm	Microsoft Teams  <a href="https://www.eventbrite.com/e/re-alert-to-hermeneutics-tickets-164969982659">https://www.eventbrite.com/e/re-alert-to-hermeneutics-tickets-164969982659</a>	Lenses: RE Alert to Hermeneutics
Wednesday 24 <sup>th</sup> November 2021 5.00-7.00pm	Live session at Birmingham Progressive Synagogue 1 Roseland Way, Birmingham B15 1HD  <a href="https://www.eventbrite.com/e/re-subject-knowlege-programme-judaism-tickets-164971186259">https://www.eventbrite.com/e/re-subject-knowlege-programme-judaism-tickets-164971186259</a>	Westhill RE Subject Knowledge Programme: Judaism*
Thursday 20 <sup>th</sup> January 2022 4.00-6.00pm	Microsoft Teams  <a href="https://www.eventbrite.com/e/multidisciplinary-balanced-re-ofsted-ways-of-knowing-tickets-164971902401">https://www.eventbrite.com/e/multidisciplinary-balanced-re-ofsted-ways-of-knowing-tickets-164971902401</a>	Lenses: Multidisciplinary, Balanced RE (Ofsted: 'Ways of Knowing')
Thursday 17 <sup>th</sup> February 2022 4.00-6.00pm	Live session at local CE church (St Nicholas, Kenilworth)  <a href="https://www.eventbrite.com/e/re-subject-knowledge-programme-christianity-tickets-165120498857">https://www.eventbrite.com/e/re-subject-knowledge-programme-christianity-tickets-165120498857</a>	Westhill RE Subject Knowledge Programme: Christianity*
Thursday 10 <sup>th</sup> March 4.00-5.30pm	Microsoft Teams  <a href="https://www.eventbrite.com/e/academically-rigorous-re-high-quality-re-encounter-and-enquiry-tickets-166024821711">https://www.eventbrite.com/e/academically-rigorous-re-high-quality-re-encounter-and-enquiry-tickets-166024821711</a>	Academically Rigorous RE: Two Key Drivers for High Quality RE-Encounter and Enquiry
Thursday 5 <sup>th</sup> May 2022 4.00-5.30pm	Microsoft Teams  <a href="https://www.eventbrite.com/e/academically-rigorous-re-using-knowledge-organisers-in-re-tickets-166025228929">https://www.eventbrite.com/e/academically-rigorous-re-using-knowledge-organisers-in-re-tickets-166025228929</a>	Academically Rigorous RE: Using Knowledge Organisers in RE
Thursday 9 <sup>th</sup> June 2022 4.30-6.30pm	Live session at Forest Hermitage Buddhist Monastery, Lower Fulbrook, Warwickshire  <a href="https://www.eventbrite.com/e/buddhist-traditions-tickets-165125670325">https://www.eventbrite.com/e/buddhist-traditions-tickets-165125670325</a>	Westhill RE Subject Knowledge Programme: Buddhist Traditions*
Thursday 16 <sup>th</sup> June	Microsoft Teams  <a href="https://www.eventbrite.com/e/academically-rigorous-re-six-core-concepts-for-pupils-to-know-in-re-tickets-165131724433">https://www.eventbrite.com/e/academically-rigorous-re-six-core-concepts-for-pupils-to-know-in-re-tickets-165131724433</a>	Academically Rigorous RE: Six Core Concepts for Pupils to Know in RE for Better Transition from Primary to Secondary



## SACRE RE Subject Knowledge Enhancement Programme 2021-2022 (Westhill Grant Funded)

We hope to relaunch our Westhill RE Subject Knowledge Enhancement Programme in 2021-2022, beginning with Hindu Traditions on 21<sup>st</sup> October 2021 4.00-6.00pm at and then the rescheduled Judaism session on Wednesday 24<sup>th</sup> November 2022 5.00-7.00pm (please note this is a Wednesday and is also at a later time to allow for travel; the synagogue is close to the train station. A kosher buffet will be provided). Following these we will hold sessions on Christianity in the Spring Term 2022 and Buddhism in the Summer Term 2022.

The films, road maps and photo packs for our first two sessions on Sikhism and Islam are available at right at the bottom of the page:

<https://www.warwickshire.gov.uk/sacreresources> and there are guidance notes on how to use these for developing teachers' subject knowledge. **They are not intended for use with pupils.**

### NEW SACRE Resources for Schools



### SACRE Guidance for Teaching RE from September 2021

SACRE are aware that it is very likely that there have been gaps in the teaching of the Coventry & Warwickshire Agreed Syllabus during the past two academic years due to the Coronavirus Pandemic. Schools may be beginning to consider how they should best proceed with the teaching of the RE curriculum when some units may not have been taught and some key knowledge may be missing.

#### Conducting an Audit

It would be helpful to do an audit of which units have been taught during 2020-2021 and which have not. You can do this by highlighting and annotating your RE long term plan/curriculum map after asking teachers to inform you of what has/has not been taught. It is useful to annotate your RE LTP/curriculum map so you can see which units are Believing, Expressing and Living and which units are systematic units (where one concept or tradition is looked at in depth) and which are thematic units (where a theme or concept is looked at in breadth across several traditions and worldviews).

When your audit is complete, ask yourself some key questions:

- Is there a particular religious tradition that has been taught significantly less than normal?
- Is there a particular strand (Believing, Expressing, Living) that has been covered less?
- Is there a particular year group that have done significantly less RE?
- Has there been sufficient learning within RE lessons/captured within RE books to be able to assess pupils against end-of-key stage outcomes?

As you look at your curriculum and make plans for 2021-2022, the following are some considerations you may want to make:

- Will your pupils be on track to meet end-of-key-stage outcomes (see p.32, 46 & 70 in the CWAS for these for each key stage) by the end of the academic year 2021-2022? If not, what changes need to be made to your RE curriculum to ensure they can?
- Will all pupils be given opportunity to engage with theology (through 'Believing' units), philosophy (through 'Expressing' units) and human and social sciences (through 'Living' units) during the 2021-2022 academic year?
- Will all pupils be able to study a range of religious traditions and worldviews (such as Humanism) during 2021-2022 (see p.2 and p.13 of the CWAS for guidance)?
- Will all pupils have the chance to study both systematic units (where one concept or tradition is looked at in depth) and thematic units (where a theme or concept is looked at in breadth across several traditions and worldviews) during 2021-2022?

Some key principles for you to act upon when planning for your RE curriculum for 2021-2022:

- If your audit reveals that one particular religious tradition or worldview has been neglected in terms of teaching and learning during the

pandemic, ensure that there are plans for that tradition to be taught across relevant year groups during 2021-2022.

- If your audit reveals pupils were not in a position to meet end-of-year-outcomes in 2020-2021, ensure that your planned RE curriculum for 2021-2022 will better allow them to do this.
- If your audit reveals that pupils have not been given the opportunity to study theology (Believing), philosophy (Expressing) and human and social sciences (Living) in 2020-2021, try to ensure your RE curriculum map for 2021-2022 will allow multi-disciplinary RE to take place, with a balance of these units in each year group. If you must prioritise, you will see that the CWAS gives slightly more weighting to Believing (theology) units in KS1 and Believing and Living in KS2 and KS3.
- If your audit reveals that pupils have not done a balance of systematic and thematic units, try to even this up in your 2021-2022 curriculum plan. If you must prioritise, pupils especially need the core knowledge contained within systematic units.
- If pupils over the past two academic years left your primary school without sufficient opportunity to meet end-of-key-stage outcomes in Year 6, try to ensure that those leaving in July 2022 will at least have sufficient understanding of these core concepts in order to best prepare them for KS3 RE:
  - Buddhist Traditions: The Life of the Buddha, The Four Truths, The Noble Eightfold Path
  - Christianity: The Trinity, Incarnation, Salvation
  - Hindu Traditions: Dharma, Moksha, Karma, Puja
  - Islam: Prophet Muhammad (PBUH), The Quran, Ummah (community), Tawhid (belief in one God)
  - Judaism: Shabbat, Hebrew Prayer, Torah
  - Sikhism: Langar, Sewa (service), the Living Guru (Guru Granth Sahib)
  - Humanism: Atheism/agnosticism, morality, The Golden Rule

You may find the units you have planned for 2021-2022, or have been covered in the past, are sufficient to achieve this. If this is not the case, you may need to create some bespoke plans for Y6 to ensure this will be the case.

As you plan your RE curriculum for 2021-2022, we would like to remind you of the recommended curriculum time for RE:

<b>4–5s</b>	<b>36 hours of RE</b> , e.g. 50 minutes a week or some short sessions implemented through continuous provision
<b>5–7s:</b>	<b>36 hours of tuition per year</b> (e.g. an hour a week, or less than an hour a week plus a series of RE days)
<b>7–11s:</b>	<b>45 hours of tuition per year</b> (e.g. an hour a week, or a series of RE days or weeks amounting to 45+ hours of RE)
<b>11–14s:</b>	<b>45 hours of tuition per year</b> (e.g. an hour a week)
<b>14–16s:</b>	<b>5% of curriculum time, or 70 hours of tuition across the key stage</b> (e.g. an hour a week for 5 terms, or 50 minutes per week, supplemented with off-timetable RE days)
<b>16–19s:</b>	<b>Allocation of time for RE for all should be clearly identifiable.</b>

This can be in weekly lessons, blocked units, theme days/weeks.

In closing, RE has great capacity to support pupils in readjusting during and after the pandemic. It allows for the development of critical thinking, respectful challenge and spiritual development, all of which are relevant to life. As well as this, academic skills such as reading, writing and the ability to construct reasoned arguments are skills that can be used across other subjects, not just RE. RE is an academic subject, deserving to be taught (in line with legal requirements for *all* pupils) with ample curriculum time and academic rigour and we urge you to ensure RE is back on your curriculum in 2021-2022.

If you have any comments or queries with regards to your RE curriculum or would like some further support, please email Jennifer Jenkins, RE Facilitator for Coventry & Warwickshire:

[jennifer.jenkins@coventry.gov.uk](mailto:jennifer.jenkins@coventry.gov.uk) (Coventry schools)

[jenniferjenkins@warwickshire.gov.uk](mailto:jenniferjenkins@warwickshire.gov.uk) (Warwickshire schools)

You will find a PDF version of this guidance in Section 6 of the Warwickshire SACRE website: <https://schools.warwickshire.gov.uk/managing-schools/standing-advisory-council-religious-education-sacre/4?documentId=33&categoryId=6>





## SACRE Guidance for RE Visits and Visitors

This new resource offers guidance to SACRE members and those hosting RE visits at places of worship, teachers planning RE trips and expectations for what pupils should get out of these learning experiences. Content grids for coverage of each tradition within the Coventry and Warwickshire Agreed Syllabus (CWAS) are also provided as part of the resource, to aid those hosting to match visit content with the expectations of the CWAS and teachers in planning the best timing and focus for their visits/visitors. We hope you find this a useful addition to our SACRE-Suggested List of Visits and Visitors. You will find these resources in Section 6 of the Warwickshire SACRE website:

<https://schools.warwickshire.gov.uk/managing-schools/standing-advisory-council-religious-education-sacre/4?documentId=33&categoryId=6>

## Big National Developments in the Teaching of RE

There are several large developments in the teaching of RE which you should be aware of:

- New Research Report for RE from OFSTED
- Multi-Disciplinary Balanced RE: Theology, Philosophy, Human & Social Sciences
- Worldviews Approach to Teaching RE

See below for some key links and resources. CPD will focus on these things in 2021-2022.



### OFSTED REPORT on RE

**No specific CPD on this but the findings from the report will be woven into all future CPD**

The recent report on RE from OFSTED is a comprehensive read. It is available here: <https://www.gov.uk/government/publications/research-review-series-religious-education/research-review-series-religious-education>

Some of the key takeaways from the report are:

- Academic subject with intentional rigour and progression



- ❑ Priority subject with ample timetabling and strong framing from SLT
- ❑ ‘Collectively enough’- breadth and depth, RE not PSHE
- ❑ Importance of CPD and subject knowledge for teachers
- ❑ Types of knowledge- substantive, disciplinary (‘ways of knowing’) & personal knowledge

NATRE offer a response to the report here:

<https://www.natre.org.uk/news/latest-news/natre-welcome-ofsted-s-re-research-report/>

You might also find this summary from NATRE of RE in OFSTED Deep Dives helpful:

<https://www.natre.org.uk/uploads/Ofsted%20Primary%20and%20Secondary%20Reports%20Autumn%202019%20221119%20final%20final.pdf>

## Multi-Disciplinary Balanced RE



**CPD for this will take place on Thursday 20<sup>th</sup> January 2022 4.00-6.00pm via Microsoft Teams**

The Balanced RE website is a good place to start for understanding multi-disciplinary RE: <https://balancedre.org.uk/>

These are also useful documents to develop your understanding:

<https://www.reonline.org.uk/news/re-in-a-broad-and-balanced-curriculum-a-practical-tool/>

[https://www.churchofengland.org/sites/default/files/2018-03/Key%20principles%20of%20a%20balanced%20curriculum%20in%20RE\\_0.pdf](https://www.churchofengland.org/sites/default/files/2018-03/Key%20principles%20of%20a%20balanced%20curriculum%20in%20RE_0.pdf)

<https://impact.chartered.college/article/balanced-re-thoughts-re-curriculum-design/>

Lincolnshire Diocese offer these two very helpful audit tools for looking at your RE Curriculum:

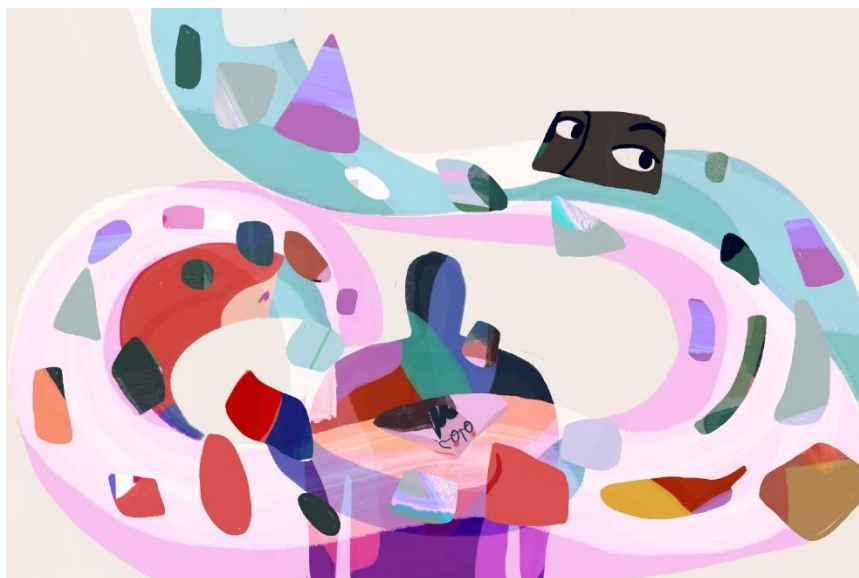
<https://www.lincolndiocesaneducation.com/attachments/download.asp?file=272&type=pdf> (primary)

<https://www.lincolndiocesaneducation.com/attachments/download.asp?file=273&type=pdf> (secondary)

## Worldviews Approach to Teaching RE



**CPD for this will take place on Thursday 30<sup>th</sup> September 2021 4.00-6.00pm via Microsoft Teams**



Watching this excellent new video from Theos, *Nobody Stands Nowhere* by Emily Downe is an excellent way to start understanding worldviews for yourself, other teachers and pupils. You can watch it here: <https://youtu.be/AFRxKF-Jdos>

See RE Online for commentary and still images from the animation:  
<https://www.reonline.org.uk/news/nobody-stands-nowhere/>

RE Online have also begun a collection of resources from people sharing a range of worldviews: <https://www.reonline.org.uk/resources/telling-my-worldview-story/>

Similarly, NATRE have their 'Real People, Real Faith' series of videos available here: <https://www.natre.org.uk/about-natre/projects/real-people-real-faith/>

RE Subject Leader, Dawn Cox, has put together this thread of videos that can be used for introducing a worldviews approach to teaching RE:

[https://threadreaderapp.com/thread/1430836039942344706.html?fbclid=IwAR3AMCHrK7KiPzbQapslZNj5U\\_r7dAOEkWoOpdQ9f\\_T2JwILWJMcsIff\\_A](https://threadreaderapp.com/thread/1430836039942344706.html?fbclid=IwAR3AMCHrK7KiPzbQapslZNj5U_r7dAOEkWoOpdQ9f_T2JwILWJMcsIff_A)



RE Online's Voices from Religion and Worldviews offers yet another perspective:

<https://www.reonline.org.uk/resources/voices-from-religion-and-worldviews/>

<https://www.reonline.org.uk/teaching-resources/places-of-worship-voices-from-religion-and-worldviews/>

Coventry and Warwickshire SACREs are working on developing some resources to support you in taking a worldviews approach to teaching RE and we hope to begin sharing those in the Autumn Term 2021.

To better understand what is meant by a worldviews approach to RE, these documents and discussion papers are very helpful:

<https://www.theosthinktank.co.uk/research/2020/10/21/worldviews-in-religious-education>

<https://www.religiouseducationcouncil.org.uk/wp-content/uploads/2021/01/The-Worldview-Project.pdf>

<https://www.religiouseducationcouncil.org.uk/wp-content/uploads/2021/01/REC-Worldview-Report-A4-v2.pdf>

<https://www.reonline.org.uk/research/research-of-the-month/what-does-the-shift-to-worldview-mean-for-teachers/>

<https://democracy.devon.gov.uk/documents/s26567/Worldviews%20and%20RE.%20Devon%20SACRE.pdf>

For a good example of a worldviews approach to a specific tradition, take a look at the Islam as a Worldview resources developed by Lynn Revell and Kate Christopher as featured in RE Online’s Research of the Month:

<https://www.reonline.org.uk/research/research-of-the-month/>

If you haven’t read the CORE Report from 2018, worldviews is first mentioned as an approach to teaching RE there and is a good starting point:

<https://www.commissiononre.org.uk/wp-content/uploads/2018/09/Final-Report-of-the-Commission-on-RE.pdf>

\*\*\*\*\*

## Coventry City of Culture



## FAITH

SEPTEMBER 2021

Co-produced by Coventry City of Culture Trust and the Royal Shakespeare Company  
Locations across the city.

### FAITH

Faith is a 24-hour invitation to find out what keeps each of us going in tough times, and together we will explore how people of faith, and of non-religious world views, understand and celebrate the chapters and the mysteries of their lives. It will encourage, challenge and spotlight discussions around who and what we have faith in.

Beginning with an opportunity to eat together across the city, and to learn how we each mark our weekend, this unique piece of theatre will tell the stories of Coventry families, sharing their very different relationships with faith and hope, through a series of journeys in the streets and through the faith buildings of the Coventry Sacred Space (an area which runs from the city centre into north Coventry and encompasses faith buildings from almost all of the major religions as well as green and other sacred spaces that are used by people of all faiths and none).

Told through music, theatre installation and ritual, we will unfold an epic overarching story, culminating in an extraordinary moment that everyone can take part in.

The research and development of Faith has been guided and informed by many individuals who play active roles in the diverse faith communities of Coventry, and we look forward to continuing to collaborate with these communities as we bring the idea to life in 2021.

### CREATIVE TEAM

Conceived as a theatrical production that can be enjoyed by audiences while social distancing, it is led by RSC Deputy Artistic Director, Erica Whyman, Associate Director Jen Davis, and Coventry based writer Chris O’Connell, playwright Chinonyerem Odimba and with Design Consultant, Tom Piper

\*\*\*\*\*

## The findings of the NATRE Survey into Supporting RE in Your School

### Primary RE 1000 Project with RE Today

#### Giving primary schools access to high-quality RE resources

**There is still the opportunity to take up this excellent offer.**

The National Association of Teachers of RE (NATRE) has received generous funding to support more primary schools with high quality RE resources. Helping to deliver RE in engaging and exciting ways, Primary RE 1000 offers a special two year Bronze membership package.

Only available to eligible schools, NATRE aims to increase access to fantastic resources, and this funding has made it possible at a subsidized price of just £55. If you would like to find out if your school is eligible please email me:

[Jennifer.Jenkins@coventry.gov.uk](mailto:Jennifer.Jenkins@coventry.gov.uk) (Coventry schools) or [jenniferjenkins@warwickshire.gov.uk](mailto:jenniferjenkins@warwickshire.gov.uk) (Warwickshire schools). If you ARE eligible, I can send you a discount code and you will need to quote me as your referrer in order to get the discounted offer. More details on this project can be found here: <http://www.natre.org.uk/membership/primary-re-1000/>



\*\*\*\*\*

### REQM



SACRE recommends schools who have been working on high quality RE provision through dedicated subject leadership, think about applying for the Religious Education Quality Mark (REQM). You can find out more about it here: <https://www.reqm.org/> or make contact with me so I can connect you with someone who can tell you a bit more.

Harris CE Academy in Rugby recently received the award and you can read about their achievement here: <https://www.rugbyadvertiser.co.uk/education/school-in-rugby-praised-for-its-diverse-and-innovative-teaching-of-religion-3251992>

If you have also been awarded the REQM r are working towards an application, please do get in touch.

\*\*\*\*\*

## Making Links with Higher Education

NATRE have produced a great list of how you might link in the HE to support RE. You can find the list here: <https://www.natre.org.uk/secondary/making-links-with-universities/>



TRS-UK have produced some great videos documenting how people from a variety of jobs have used their degree in Theology or Religious Studies: <https://trs.ac.uk/studying-trs/graduate-videos/> You might recognise someone...

There is also another video here: <https://www.truetube.co.uk/film/my-future-my-career-my-re?tab=film>



## RE Subject Leadership

If you are new to leading RE as a subject, you will find some resources on the Warwickshire SACRE website to help you get started under Section 8: RE Subject Leader Network Meeting Materials (2018-2021):

<https://schools.warwickshire.gov.uk/managing-schools/standing-advisory-council-religious-education-sacre/4>



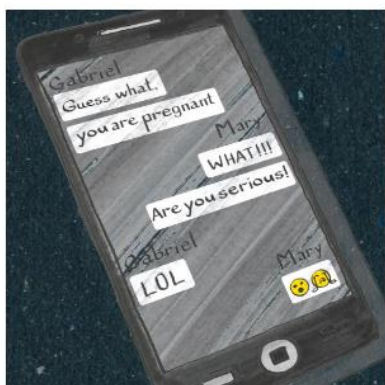
TO ENTHUSE. TO EDUCATE. TO INSPIRE.

Teach RE has four free study modules available here: <https://www.teachre.co.uk/free-self-study-courses/> These include a focus on religion and worldviews and RE subject knowledge.



## Useful Resources for RE

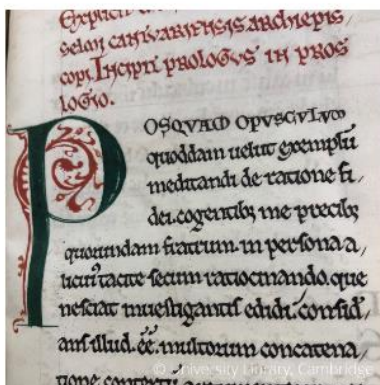
Cambridge University School of Divinity have produced an excellent selection of videos and resources (such as the examples below), bringing expertise from HE into your classroom:



### What is The Annunciation?

Explore questions of gender, faith and obedience with Dr Ruth Jackson-Ravenscroft

[What is The Annunciation? >](#)



### Can we prove God's existence?

Discover Anselm's Proslogion and the ontological argument with Professor Catherine Pickstock

[Can we prove God's existence? >](#)



### What is a mosque for?

See inside the eco-friendly Cambridge mosque with Dr Tim Winter

[What is a mosque for? >](#)

<https://www.divinity.cam.ac.uk/study-here/open-days/cambridge-your-classroom>

\*\*\*\*\*



The British Library have online opportunities for KS2 pupils to explore sacred texts: <https://www.bl.uk/events/exploring-sacred-texts-primary-session-materials> as well as some fantastic teaching resources for secondary RE: <https://www.bl.uk/sacred-texts/teaching-resources>





### Discovering Sacred Texts: Buddhism content

Language: English  
Curriculum: UK  
Levels: Ages 14 to 16, Ages 16 to 18  
Subject: Religious Education

Discovering Sacred Texts contains numerous articles, collection items and film clips that explore different aspects of B...



### Discovering Sacred Texts: Christianity

Language: English  
Curriculum: UK  
Levels: Ages 14 to 16, Ages 16 to 18  
Subject: Religious Education

Discovering Sacred Texts contains numerous articles, collection items and film clips that explore different aspects of C...



### Discovering Sacred Texts: Hinduism

Language: English  
Curriculum: UK  
Levels: Ages 14 to 16, Ages 16 to 18  
Subject: Religious Education

Discovering Sacred Texts contains numerous articles, collection items and film clips that explore different aspects of H...

\*\*\*\*\*

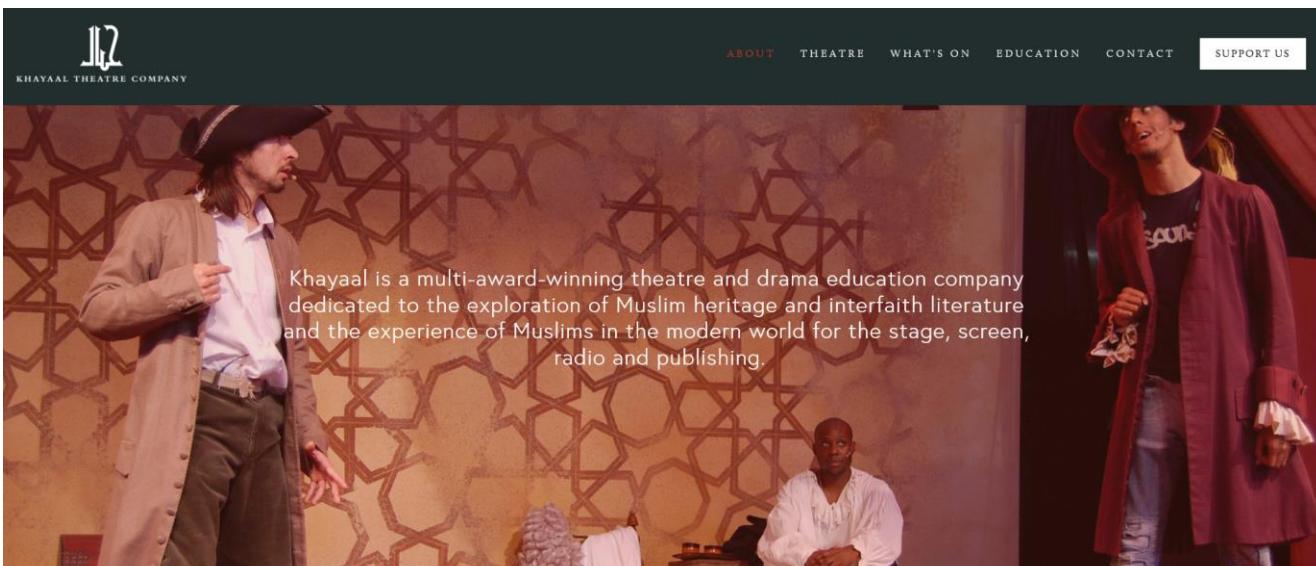
**Festivals Calendar**

Filter festivals by

CHOOSE MONTH 1 selected	SELECT RELIGION/WORLDVIEW Relevance	Submit
----------------------------	--	--------

Check out RE Online’s useful festivals calendar here:  
<https://www.reonline.org.uk/festival-calendar/>

\*\*\*\*\*



Khayaal Theatre Company offer a great opportunity for exploring Islamic heritage:  
<https://www.khayaal.co.uk/about>

\*\*\*\*\*

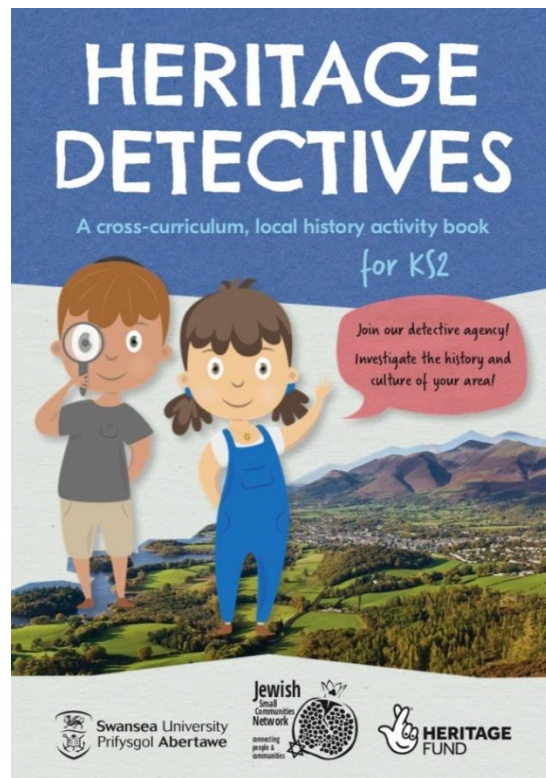


The Free Churches Group are offering some great resources about Reforming Christianity', available here: <https://www.freechurches.org.uk/reforming-christianity>



I have written a blog post for RE Online about the importance of creating safe spaces for spiritual development within the classroom:  
<https://www.reonline.org.uk/2021/06/22/how-i-make-sure-my-classroom-is-a-safe-space-for-spiritual-development/>

\*\*\*\*\*



Heritage Detectives is a new resource to support pupils in exploring heritage, and specifically Jewish heritage, within the UK. You can download the resource booklet from this page, as well as additional resources and videos:

<https://jscn.org.uk/heritagedetectives/>

\*\*\*\*\*

## Peace and Reconciliation

The Global Peace Index for 2021 is now out and is a useful resource for looking at how the world has changed in terms of peace and conflict over the past 12 months:

<https://www.visionofhumanity.org/resources/>



Coventry schools can apply for the Coventry Peace Award. For details visit <https://coventrypeaceaward.uk/> Talks are currently underway for a Warwickshire award.



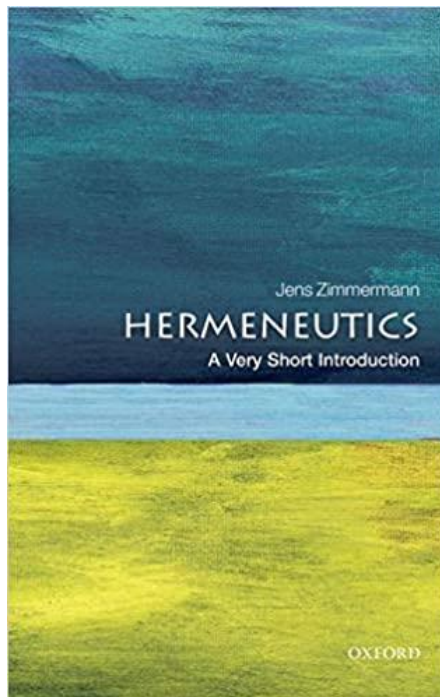
Coventry Cathedral's ICON Schools Programme offers you the chance to further develop your peace and reconciliation work and connect with a network of schools

locally, nationally and globally. For more information on ICONS visit:  
[https://www.coventrycathedral.org.uk/wpsite/icon-schools/?doing\\_wp\\_cron=1625137313.8114569187164306640625](https://www.coventrycathedral.org.uk/wpsite/icon-schools/?doing_wp_cron=1625137313.8114569187164306640625)

\*\*\*\*\*

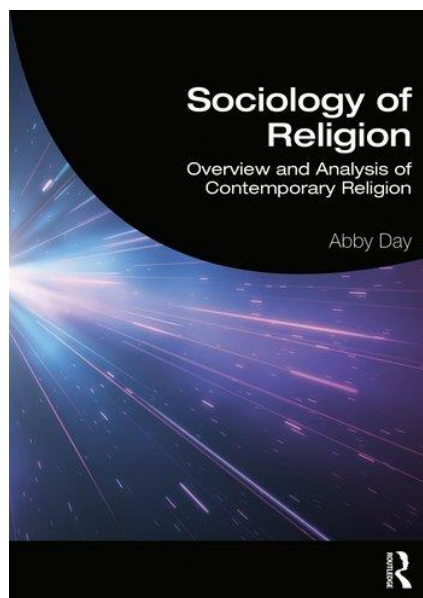
## RE Book Recommendations

### A Short History of Hermeneutics by Jens Zimmermann



This is a great little book for introducing you to the concept of hermeneutics (the art or skill of interpretation)- relevant to teaching sacred texts.

### Sociology of Religion by Abby Day



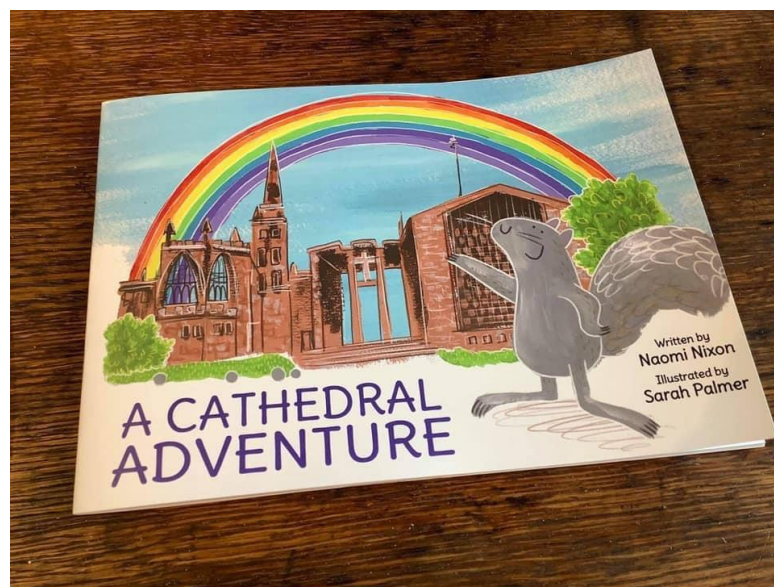


This book by Abby Day is a fabulous read if you are wanting to further your understanding of the discipline of human and social science within the teaching of RE.

<https://www.routledge.com/Sociology-of-Religion-Overview-and-Analysis-of-Contemporary-Religion/Day/p/book/9780367151911#:~:text=Abby%20Day%20is%20a%20Professor,and%20in%20de%2Dcolonizing%20knowledge>

**There is a new book out about Coventry Cathedral!**

**A Coventry Cathedral Adventure by Naomi Nixon and Sarah Palmer**



**Written by a local vicar, you can purchase this charming picture book here:**  
[https://stclaresatthecathedral.org/product/a-cathedral-adventure-by-naomi-nixon-and-sarah-palmer/?fbclid=IwAR2ANqJHfUTpNVKGGZ1GGQtMqKTo\\_BKZKotoSvYsu16xCI3gr3X5Cknt79so](https://stclaresatthecathedral.org/product/a-cathedral-adventure-by-naomi-nixon-and-sarah-palmer/?fbclid=IwAR2ANqJHfUTpNVKGGZ1GGQtMqKTo_BKZKotoSvYsu16xCI3gr3X5Cknt79so)



**We have been made aware of the following achievements by local schools:**



- Blue Coat
- Cardinal Newman
  - Earlsdon
- Good Shepherd
- Holy Family
  - Howes
  - Seva
- St Peter and Paul
  - Stivichall
  - Templars



- Southam College
- Harris CE Academy

If your school has also recently won one of these awards, or another RE-related accolade, and you are not mentioned here, please get in touch so we can celebrate your achievement with you in our next RE bulletin!