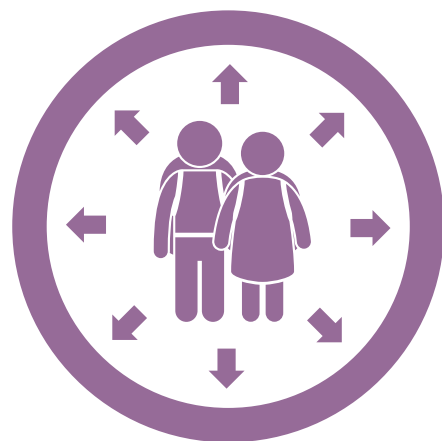


Warwickshire's Alternative Education Provision Framework

January 2019

Version 1: 23.01.19



Working in partnership, celebrating success, aiming for excellence

Contents

	Page
A. Overview.....	3
B. What is Alternative Education Provision?.....	3
C. Warwickshire’s Alternative Education Framework.....	3
D. Quality Assurance.....	4
E. List of Providers.....	5
F. Referral Process for Full or Part-time Alternative Provider (AP) Placements.....	6

Provider Profiles

A. Aim Educational Ltd.....	7
B. Leamington LAMP.....	8
C. Leamington Vineyard Learning Centre.....	10
D. North Warwickshire & South Leicestershire College.....	12
E. Nulogic Training Ltd.....	13
F. Nuneaton & Bedworth Leisure Trust.....	15
G. ORION Training & Development.....	17
H. Positive about Young People.....	19
I. Shaftesbury Young People.....	20
J. The Dare2Dream Foundation.....	22
K. TUTE Education Limited.....	23
L. U-NEEK Learning Ltd.....	25
M. Values Academy.....	27
N. Warwickshire College Group.....	28
Glossary.....	29

Appendices

1. Call Off Contract.....	31
---------------------------	----

A. Overview

High quality Alternative Education Provision is required to meet the needs of secondary aged pupils who are at risk of exclusion or have been permanently excluded from school or who are missing education for any reason other than permanent exclusion.

Warwickshire County Council's vision is that every Alternative Provider delivering education to a Warwickshire child will be centres of excellence in alternative provision.

B. What is Alternative Education Provision

Alternative Provision is education arranged by Local Authorities for learners who, because of exclusion, illness or other reasons, would not otherwise receive suitable education; education arranged by schools for learners on a fixed period exclusion; and learners being directed by schools to off-site provision to improve their behaviour (DFE 2013).

C. Warwickshire's Alternative Education Framework

Warwickshire's Alternative Education Framework is intended to meet the needs of secondary school aged children and young people at Key Stages 3 and 4.

Young people will have access to this service once it is deemed that their needs cannot be met at their current school. These young people:

- will be resident in Warwickshire and/or could be a child looked after
- may have identified and/or unidentified special educational needs, this may include Communication & Interaction/Speech and Language, Cognition and Learning as well as Social, Emotional and Mental Health needs.

Young people will be referred by secondary schools/academies, Area Behaviour Partnerships and Warwickshire County Council

Packages of alternative education provision within in this framework include:

- Full-time long term,
- Full-time short term,
- Part-time short term,
- Preventative programmes.

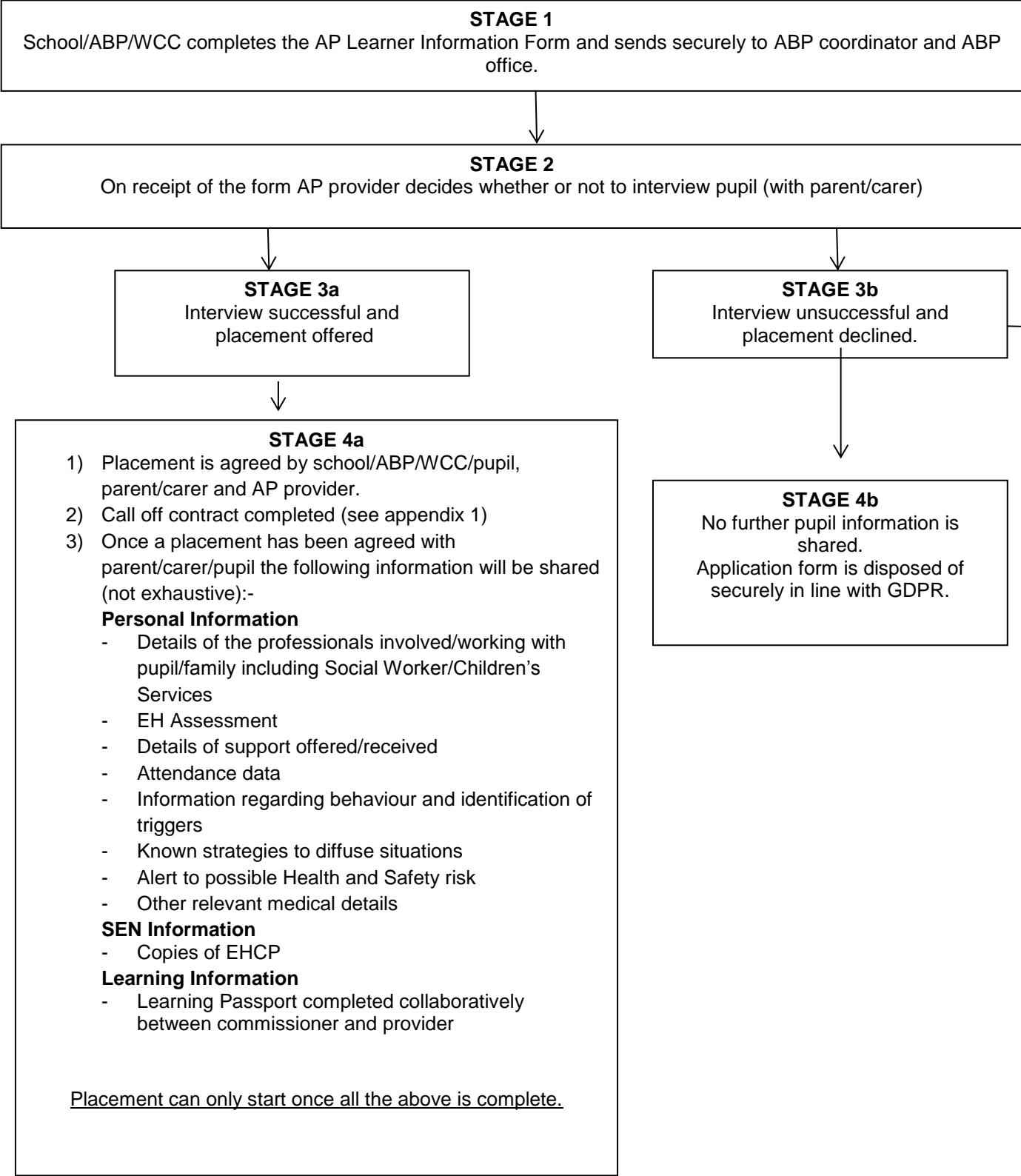
The Alternative Education Providers listed in this directory will be working with the LA, Area Behaviour Partnerships and secondary schools/academies to achieve positive outcomes for young people for example: reintegration into a mainstream or special school, and/or progression onto positive post 16 destinations

D. Quality Assurance

All the providers in this directory have all been through a robust open and competitive tendering process which included site visits to check safeguarding and Health and Safety processes. Ofsted do not directly inspect providers of alternative education although they may visit these establishments as part of their inspection of schools and colleges. That is why it is vital that the Commissioner plays a part in ongoing quality assuring alternative providers through its contract monitoring obligations.

Name of Provider	Location	Cost per learner	Part Time / Full Time	Registered School
Aim Educational Ltd	Atherstone, North Warwickshire	£90.00/day	Part-time short term	No
Dare to Dream Foundation	Coventry	£85.00 and over Daily rates: Time2Shine:- £250/day Aspire2Achieve:- £100/day Aspire2engage:- £100-£250/day	Part-time short term	No
Leamington Lamp	Leamington Spa	£120.00 /day	Part-time short term	No
Leamington Vineyard Learning Centre	1. Leamington spa 2. Rugby	£100.00 /day	Up to 15 hours, over 3 days	No
North Warwickshire & South Leicestershire College	Nuneaton	£95.00-£100.00 /day	Up to full time hours	No
Nulogic Training Ltd	Various locations	£110.00 /day	Up to 10 hours a week	No
Nuneaton & Bedworth Leisure Trust	Nuneaton	£236.25 /day	Up to 17 hours per week	No
Orion Training and Development	TBC	£59.99 /day	Up to 17.5 hours per week	No
Positive about Young People	1. Warwick 2. Bedworth	£100.00 /day	Up to 18 hours	No
Shaftesbury Young People	Kerseley, Coventry	£105.00 /day (£525 per week)	Full time hours (up to 25 hours per week)	Yes
TUTE Education Ltd	On-line delivery	£33.00 /day	Part-time short term	No
U-NEEK Learning Ltd	Hinckley, Leicestershire	£64.99 /day	Part-time short term	No
Values Academy	Nuneaton,	£76.00 /day (£380/week)	Full time (up to 25 hours per week)	Yes
Warwickshire College Group	1. Leamington Spa 2. Moreton Morrell 3. Warwick 4. Rugby	£84.50 /day	Part-time short term	No

E. Referral Process for full or part-time Alternative Provider (AP) placements



AIM Educational Ltd
 12 Rotherhams Hill
 Baddesley Ensor
 Atherstone
 CV9 2DR

Tel: 01827 711289
 Email: enquiries@aimeducation.org.uk



<p>Type of Setting</p>	<p>AIM Educational Ltd is an alternative education provider based around a small enterprise farm, specialising in rare breed sheep and pigs, as well as a large variety of other animals.</p> <p>Our site consists of 8 acres of land in the North Warwickshire countryside, 6 unique teaching spaces, and variety of animal homes, such as sties, stables, and paddocks.</p> <p>We are committed to helping children and young people with special educational needs and disabilities, particularly those with Autism and Asperger's Syndrome, and those who are unable to engage in mainstream education due to learning, social, emotional or behavioural issues.</p> <p>Our goal is to empower learners to positively change negative behaviour patterns, to develop confidence, personal, social, communication and independent learning skills, as well as gaining work-related skills.</p>
<p>Provision Offered</p>	<p>We offer a variety of courses and qualifications from Entry Level to GCSE.</p> <p>Maths, English, Art, Horticulture, IT, Electronics, Game Development, Food Technology, Food Hygiene, Science, Skills for Living & Work, Care of Animals, Independent Living, Understanding relationships, Household Expenses, Drug & Alcohol Awareness, Vehicle/Tractor/Motor Maintenance.</p>
<p>Accreditation/ qualifications</p>	<p>We offer a variety of qualifications from Entry Level through to GCSE.</p> <p>OCN (The Open College Network) qualifications, including Stepping Stones to Functional Skills English and maths, Functional Skills English, maths, and IT, as well as a number of creative, vocational, life skills, and independent living courses.</p> <p>Whilst such courses are essential for learners to develop the necessary skills to succeed in life, we only encourage a learner to embark on more formal qualifications when they are ready</p>
<p>Pupil to Staff Ratio</p>	<p>1:1 dependant of individual pupil needs.</p>
<p>Key Stages</p>	<p>Key Stage 3 and 4</p>
<p>Registered school</p>	<p>No</p>
<p>Cost</p>	<p>£90.00 per pupil per day.</p>

Leamington LAMP Riverside

Adelaide Road

Leamington Spa

CV32 5AH

Tel: 01926 886699

Email: info@leamingtonlamp.co.uk



Type of Setting	<p>LAMP continues to operate and develop methodology that was devised in 1999 by the current Strategic Director when he created one of the first Alternative Education provisions in the region. Creativity and technology were employed as tools of re-engagement for vulnerable young people. The aim being to increase learner's skills, confidence and aspirations to enable them to function effectively in society, with the ultimate goal of achieving academic success.</p> <p>Leamington Lamp specialises in working with young people with autism and/or high anxiety that don't fit in to mainstream education. We work with 14 -19 year olds, some of whom may have been out of the education system for some time, and engage them into learning.</p> <p>We have a learner centred approach to teaching, and our class sizes range from 1 to 7 students per room. Our programmes are tailored to each student and vary from one hour a week courses up to four days per week. Full time placements are possible for students at Year 12 / 13 with an EHCP. Our admissions process is co-ordinated through local schools and Warwickshire County Council's Specialist Teaching Service, who refer young people to us that fit our delivery methods.</p> <p>Our mission is to re-engage young people into education through the arts, helping them reach their creative & academic potential, and inspiring them to become lifelong learners. Our core values are:</p> <ul style="list-style-type: none">· Delivering a student-centred curriculum· Teaching young people to become independent learners· Helping young people understand personal health and safety· Fostering a growth mindset· Allowing creativity to flourish in every young person <p>Our facilities are very well equipped with both Apple Mac and Windows computers, fully equipped art studio, digital and darkroom photography studio, range of musical instruments plus full recording studio / control room, full kitchen including induction hob.</p> <p>We operate a shared lounge space where students and staff share facilities at break times. Extracurricular activities currently include Debating, Pictionary, Archery, Circus Skills, Experimental Music, Dungeons and Dragons, Chess and Table Tennis.</p> <p>We hope to be operating as an Independent School by September 2019.</p>
Provision Offered	<p>We are an approved centre for Pearson and NCFE, and run GCSE courses in Maths, English Language, English Literature, and Japanese Language. We also offer NCFE Level 2 & 3 Certificates in Music Performance, Music Technology, Art & Design, Photography, Theatrical Makeup and Computer Games Development. These are all on the QCF - Qualification and Credit</p>

	Framework. All students take part in PHSE sessions and we offer Speech and Language Therapy (if recommended in an EHCP). PHSE includes progression, careers advice and employability skills.
Accreditation/ qualifications	(see above)
Pupil to Staff Ratio	Average 3:1
Key Stages	Key Stage 3 and 4
Registered school	No
Cost	£120.00 per day

Leamington (and Rugby) Vineyard Learning Centres
St Margaret's Chapter House
Church Close
Whitnash, Leamington Spa
CV31 2HJ

Tel: 07340 820763
Email: beccy.eccleston@lvlc.org.uk

<p>Type of Setting</p>	<p>The tragic reality is that children who do not have access to a consistent and regular education programme invariably fail to achieve their potential and their future life chances are severely harmed. Just 1% of excluded pupils achieve five good GCSEs including English and Maths. Often these students are very bright and have huge potential. LVLC exists to change this statistic. Put simply, we exist to change young peoples' lives.</p> <p>Our first centre opened in Whitnash (Leamington Spa) in September 2014 and we now have 4 centres across Leamington and Rugby. Our centres our small; our largest centre has a maximum of 7 students attending on any one day.</p> <p>LVLC can make a real difference in young lives by being different in the following ways:</p> <ul style="list-style-type: none"> • Mathematics and English are at the centre of each student's individual learning package at LVLC and RVLC. With the introduction of the English Baccalaureate, we are now offering Sciences, French and History, as well as other subjects where appropriate and possible. • Teaching on a one to one basis will happen for the majority of the time. • We seek to help students return to mainstream school life where possible, as soon as possible. For some this will mean dealing with background issues that have led to their situation, for many it will be getting to grips with their learning difficulties, and catching up with the progress of their peers. • Our teaching is secular, but each centre has a compassionate Christian ethos, in which all children are welcomed, valued and treated with respect. Our experience has shown that this mutual respect has a powerful and transformative affect. <p>LVLC aims to serve its community by providing the highest quality of education within the context of its ethos. LVLC seeks to be a place where all students and staff are welcomed, valued and treated with respect. With this in mind, LVLC expects students to commit to high standards of behaviour.</p>
<p>Provision Offered</p>	<p>Part Time Short Term Programme: Students attend one of our centres up to 3 days/week, for a short-term placement. The number of days per week will be agreed at the start of the student's placement. This may be part of an AP package offered whilst they are waiting for longer term provision to be set up following an exclusion, or</p>

	<p>part of a package of alternative provision offered alongside time in school.</p> <p>Students focus on working towards Maths and English GCSE (with 1:1 teaching personalised to their prior knowledge and attainment), with other subjects offered where appropriate.</p> <p>Preventative Programme: Students attend one of our centres part-time, for a bespoke programme in order to avoid further fixed-term or permanent exclusion from school. The number of days per week (up to 3) will be agreed at the start of the student's placement. We work closely with professionals and undertake initial assessments in order to target the programme to the individual student's needs, so as to address the issues triggering exclusions.</p> <p>Our experience has shown that with 1:1 teaching many students realise that they are able to learn, and as such reengage with learning. This transforms their attitude towards school and prevents exclusions as they transition back to school.</p> <p>Students focus on working towards Maths and English GCSE (with 1:1 teaching personalised to their prior knowledge and attainment), with other subjects offered where appropriate.</p>
Accreditation/ qualifications	GCSE Mathematics GCSE English Language GCSE English Literature GCSE Science (Biology, Chemistry, Physics) (Separate or Double) GCSE History GCSE Languages GCSE RE
Pupil to Staff Ratio	1:1
Key Stages	Key Stage 3 and 4
Registered school	No
Cost	£100.00 per day

North Warwickshire & South Leicestershire College
Hinckley Road
Nuneaton
Warwickshire
CV11 6BH



Part of North Warwickshire and South Leicestershire College

Tel: 02476 243000

Email: sam.garnham@nwhc.ac.uk

Type of Setting	The Inspire programme was established in 2008 and is based within the grounds of North Warwickshire and South Leicestershire College in Nuneaton. Learners are referred either directly from schools or through local authority agencies such as ABP.
Provision Offered	A broad curriculum covering GCSE subjects in English (language and literature), maths, science, geography and religious studies. Also, an ASDAN qualification, as well as individualised vocational options covering catering, motor vehicle, hair and beauty.
Accreditation/qualifications	GCSE qualifications with AQA, plus BTEC Level 1/2 Awards. Other awarding bodies include IMI (Motor Vehicle), and VTCT (Hair & Beauty).
Pupil to Staff Ratio	2 staff per 8 pupils. Each pupil also has a personal coach who works with them throughout the week.
Key Stages	Key Stage 3 and 4
Registered school	No
Cost	£95.00-£100.00 per day

Nulogic Training Ltd
Head Office
311 Jewellery Business Centre
95 Spencer Street
Birmingham
West Midlands
B18 6DA



Tel: 07864 214687
Email: awint@nulogictraining.co.uk

<p>Type of Setting</p>	<p>Nulogic Training is a newly established training provider that offers schools and academies across the UK with a variety of results based motivational programmes. In addition to this, we provide alternative provision for learners to progress their academic and social skills in an environment that is better suited to optimise their potential.</p>
<p>Provision Offered</p>	<p>At Nulogic Training, we recognise that mainstream education isn't suited for everybody, alternative provision provides the opportunity for learners to progress their academic and social skills in an environment that is better suited to optimise their potential.</p> <p>We pride ourselves on offering programmes that meet mainstream expectations; programmes that allow learners the opportunity to achieve a GCSE equivalent and achieve an accredited Attainment 8 subject. All our programmes are thoroughly monitored whereby learner progression reports are sent to schools weekly detailing key information regarding the learner's development and performance with us. We understand the importance of all parties working in collaboration to achieve the best outcomes for the learners so our transparent reporting and continuous communication makes this possible. We want to make the service as practical and efficient for the school and learners therefore we offer a transport service for all our programmes.</p> <p>KS3 Programme: The primary aim for this programme is to reintegrate learners back onto a mainstream timetable by improving their behaviours and attitudes towards education; specifically, how they behave in their school. Our alternative provision programme aims to not only build learner's confidence but to help them achieve a formal qualification (Sports Leaders qualification). Our trainers ensure the programme is filled with positivity, optimism and fun. Learners on a placement with us will have the opportunity to take part in exciting activities, sports sessions, engage with motivational guest speakers and to participate in a celebration of their achievements at the end of the programme.</p> <p>KS4 Programme: The aim of this programme is to provide learners with the opportunity to achieve an accredited bucket 3 qualification towards learner's Attainment 8 score. The qualification develops transferrable skills which can be taken into</p>

	<p>further education or the workplace. When designing this programme, we understood the difficulty of being in front of a screen all day; to combat this, we include sports sessions to encourage a healthy lifestyle and maintain programme engagement.</p> <p>Our trainers ensure the programme is filled with positivity, optimism and fun. Learners on a placement with us will have the opportunity to take part in exciting activities, sports sessions, engage with motivational guest speakers and to participate in a celebration of their achievements at the end of the programme.</p>
Accreditation/ qualifications	TLM IT User Skills in Open Systems and Enterprise - Level 1 Sports Leadership Award - Level 1 & 2
Pupil to Staff Ratio	5:1
Key Stages	Key Stage 3 and 4
Registered school	No
Cost	£110.00 per day



Nuneaton & Bedworth Leisure Trust (NBLT)

**3rd Floor
Heron House
Newdegate Street
Nuneaton
Warwickshire
CV11 4EL**

Tel: 02476 400597

Email: robbie.barton@nbleisuretrust.org

<p>Type of Setting</p>	<p>Nuneaton & Bedworth Leisure Trust (NBLT) is a not-for-profit organisation and registered charity that aspires to improve people’s quality of life, health and well-being through leisure, fitness and activities which are accessible to all.</p>
<p>Provision Offered</p>	<p>Our Alternative Provision of Education offers curriculum support & early intervention to avoid exclusion and is successful because it recognises and works as a partnership between the educational authority, school, student, parent and us.</p> <p>With considerable experience working with young people we understand that more and more children struggle in mainstream school and feelings of loneliness, confusion and frustration often manifest as anger and other forms of unacceptable behaviour locking the students in a never ending cycle that can often lead to permanent exclusion.</p> <p>Our objectives are to:</p> <ul style="list-style-type: none"> • Treat the cause not the symptoms • Improve behaviour, attendance and attitude to learning • Identify positive destinations • Reintegrate into school educational progress and attainment • Support the family of each child <p>We offer an initial assessment with the partners to ensure that all aspects of the student’s life are examined to enable a holistic approach to be developed. Following this a dedicated key worker will work intensively with the student on all related and identified issues creating a range of support. Most importantly we will agree a contract outlining the expectations, detailing the support provided and the consequences that both the student and key worker will sign. Support will be personalised and delivered on a one to one basis but can be adapted to work with groups of students if required by the school or student. We can work within school / academy / or college or off site at one our dedicated learning centres.</p> <p>Outdoor educational opportunities We are experienced in positive outdoor educational activities in differing</p>

	locations around the UK and have the skills and knowledge to plan, organise and deliver activities.
Accreditation/ qualifications	<p>All of our educational courses are ASDAN accredited and will include:</p> <ul style="list-style-type: none"> • Award of Personal Effectiveness (AoPE) • Certificate of Personal Effectiveness (CoPE) • Sport & leisure • Health & Fitness • Outdoor Activities • Community involvement and volunteering • Disability and sport awareness • Work experience • PHSE • Embedded learning of Numeracy & Literacy • National Governing Body qualification in all sports • Umpiring and officiating • Gym instructor qualifications • Step in coaching programme • Pathway to employment in the sports industry • Work experience • Volunteering • CV Preparation • Interview Techniques • Work readiness programmes
Pupil to Staff Ratio	1:1 or 2:1
Key Stages	Key Stage 3 and 4
Registered school	No
Cost	£236.25 per day

ORION Training & Development
Corner of Dudley/Weston Road
Winson Green
Birmingham
B18 7QH



West Midlands Tel: 07764 466324

Email: georgina@oriontraininganddevelopment.co.uk

Type of Setting	An alternative provider for 14-18 year olds
Provision Offered	<p>Orion offers a rich curriculum relevant for today and the future, which equips all our students with skills for life and work with clear pathways to employment, apprenticeships and higher-level study. We provide a range of vocational and academic qualifications, as well as social and emotional development, in which all student's experience quality learning, set in a safe and harmonious environment, centred on driving ambition, fostering self-determination and inspiring success.</p> <p>At Orion we believe that all young people should have the right to an educational experience that will enable them, no matter what their starting point, to fulfil their potential and realise their ambition. All students attending alternative provision with Orion will be afforded the same opportunity as other students attending outstanding schools and will leave at the end of KS4 ready to face their future, equally well prepared as their peers with an equal chance of success.</p> <p>Orion has a range of personalised learning pathways for young people that include GCSE's, accredited vocational courses and work based learning opportunities.</p> <p>All students will study Maths, English and Science; will have clear and consistent 'wrap around' guidance, pastoral support, physical education and health and wellbeing designed to support them to develop their individual potential for growth, self-worth and self-control.</p>
Accreditation/ qualifications	<p>Health and Social Care</p> <p>Construction Skills</p> <p>Maths Functional</p> <p>English Functional</p> <p>Hair and Beauty</p> <p>Science</p>
Pupil to Staff Ratio	
Key Stages	Key Stage 3 and 4
Registered school	No

Cost	£59.99 per day
-------------	----------------

Positive about Young People
 Nelsons Lane
 Nelsons Lane Industrial Estate
 Warwick
 CV34 5JB

The Crox
 Croxhall Street
 Bedworth
 CV12 8JB



Tel: 01926 492609

Email: parneetkang@positiveaboutyoungpeople.co.uk

Type of Setting	PaYP has been delivering services to the most hard to reach young people for over 16 years. PaYP has adapted to the needs of the environment. Thus from a more after school provision under Warwickshire County Council, it has become a Charity specialising in Education and support It provides Educational support to secondary school students in a more nurturing environment. We are able to work more closely with students looking at their Anger Management, Self Esteem and Self Worth.
Provision Offered	PAYP offer support to students with their education, on a part time basis, who have been permanently excluded or at risk of becoming permanently excluded from school. Children Looked After and Children Missing in Education We offer education in, Maths, English, Science, Religious Education and PSHE. The subjects are delivered via an Online platform, Teaching assistants and subject teachers. Lessons sizes are small working on a ratio of 1:4 or smaller. 1:1 support is also provided.
Accreditation/ qualifications	Working towards GCSE
Pupil to Staff Ratio	4:1
Key Stages	Key Stage 3 and 4
Registered school	No
Cost	£100.00 per day

Shaftesbury Young People
Bennetts Road North
Keresley
Coventry
CV7 8LA

Tel: 02476 338583

Email: cheryl.mouldsdale@shaftesbury.org.uk

Type of Setting	The Keresley Centre is part of a charity called Shaftesbury Young People. It is registered as an independent school.
Provision Offered	The Curriculum is enhanced to deliver 5 GCSEs, Functional Skills Qualifications, Entry Level Certificates, Bespoke Academic and Full Vocational Programmes (Enriched KS3 Programme- progressing to Level 4).
Accreditation/ qualifications	<p>GCSEs</p> <p>AQA GCSE English Language and Literature</p> <p>AQA GCSE Maths Foundation</p> <p>AQA GCSE Combined Science</p> <p>Pearson GCSE ICT</p> <p>Functional Skills (Pearson & AQA)</p> <p>Entry Level English, Maths and ICT</p> <p>Level 1 English, Maths and ICT</p> <p>Level 2 English Maths and ICT</p> <p>Level 2 PSE</p> <p>ELC (Pearson & AQA)</p> <p>English Language Level 1 & 2 Certificate</p> <p>Maths Level 1 & 2 Certificate</p> <p>Science Level 1 & 2 Certificate</p> <p>ART Level 1 & 2</p> <p>Design Technology E3 & Level 1</p> <p>BTEC</p> <p>BTEC Hair & Beauty; 'Introduction'</p> <p>BTEC Sport Level 1</p> <p>Employability Qualifications/Social Life Skills</p> <p>OCN Employability Development Skills (Award, Certificate and Diploma)</p> <p>Construction, mechanics, horticulture, pottery, catering, small animal care, furniture restoration</p> <p>Apprenticeships. (Skills for Life - visits to employers, work placements, colleges, library, museums, Arts Performance, shopping centres and more....)</p> <p>Transitional:</p> <p>Student Pathway Programme supporting options to:</p> <p>re-integration back into school</p> <p>College placements</p>

	Apprenticeships
Pupil to Staff Ratio	10 staff - 15 pupils
Key Stages	Key Stage 3 and 4
Registered school	Yes
Cost	£105.00 per day

The Dare2Dream Foundation

The Newtown Centre

Newtown Road

Nuneaton, CV11 4HG

Tel: 07967 427109

Email: steve.farmer@thedare2dreamfoundation.org.uk



Type of Setting	<p>The Dare2Dream Foundation delivers a wide variety of highly bespoke wellbeing, positive behaviour support and employability programmes throughout the UK. The core aim of our work is to enhance both the mental health and life opportunities of vulnerable children and young people.</p> <p>Our programmes are specifically designed to support both individuals and targeted groups identified as:</p> <ul style="list-style-type: none">• Vulnerable/at Risk• Looked After Children• On the Cusp of Exclusion• Disengaged from Education <p>Our work is located in some of the most deprived areas of the UK, with an increasingly high number of children suffering from mental health conditions such as Anxiety, Depression, ASD and ADHD.</p> <p>We continue to change lives by working in direct partnership with local authorities that include:</p> <ul style="list-style-type: none">- Birmingham City Council- Coventry City Council- Gloucestershire County Council- Solihull Metropolitan Council- Walsall Council- Warwickshire County Council- Worcestershire County Council <p>We also work directly to support schools, academies and other likeminded organisations.</p>
Provision Offered	Social / emotional wellbeing, Positive behaviour support, Work Related Learning.
Accreditation/ qualifications	City and Guild Level 1 Land Based Work Based Qualification Princes Trust Personal Development Award
Pupil to Staff Ratio	1 staff to 4 pupils And 1 to 1
Key Stages	Key Stage 3 and 4
Registered school	No
Cost	£85.00 and over <u>Daily rates:</u> Time2Shine:- £250 Aspire2Achieve:- £100 Aspire2engage:- £100 - £250

TUTE Education Limited
Unit 3, Chesney Court
Wrexham Technology Park
Wrexham, LL13 7YP

Tel: 07946 732495
Email: kate.mccombe@tute.com

<p>Type of Setting</p>	<p>Tute is an award-winning provider of live and interactive teaching, online. We partner with schools, academies, PRUs, charities, local authorities and others to enhance existing provision and help improve outcomes for young people in and out of school.</p> <p>Provision is accessed via the Tute’s Learning Cloud: a web-based learning platform which is a secure and fully-moderated environment through which pupils access our live teaching and extend their learning between lessons.</p> <p>Students can join Tute lessons from any location offering a computer with broadband connection and a headset with a microphone. Our live and interactive lessons can blend with other provision and contribute to holistic learning solutions.</p> <p>Using chat, microphone and interactive whiteboard tools, pupils engage with their teacher and peers in real time. Combined with our unique online pedagogy, the result is a compelling learning environment where pupils can thrive.</p>
<p>Provision Offered</p>	<p>Provision includes a wide choice of accredited courses and non-accredited programmes:</p> <p>Tute Go KS2 – KS5: Targeted programmes of lessons built as interventions to support catch-up, revision and enrichment.</p> <p>Tute Extra KS3 – KS4: Lessons covering a wide range of subject areas to enrich curriculum, develop skills and knowledge beyond the core subjects, and foster in students a love and respect for learning for its own sake, including: SMSC, PHSE and E-Safety.</p> <p>Virtual School KS1 - KS5: A timetable of lessons in core subjects with a choice of differentiated programmes, mapped to the National Curriculum. Programmes can help support code B attendance for pupils learning off-site and help avoid resorting to permanent exclusion.</p> <p>Learning Programmes KS1 – KS5: Lessons built bespoke to target school’s specific need for their students and fill gaps in provision. You tell us what you need and if we have the expertise to build it, we will!</p> <p>Tute Courses KS4 -KS5: A choice of subjects at GCSE and A Level with Tute teaching the specification in one or two years. Our teachers take care of everything except exam entry.</p> <p>We always offer a FREE taster lesson for any new customer considering</p>

	<p>partnering with us.</p> <p><u>Shared lesson</u> prices (pay per seat in a lesson and join at Tute times)</p> <table> <tr> <td>Tute Virtual School</td> <td>£11.00</td> </tr> <tr> <td>Tute Courses</td> <td>£20.00</td> </tr> <tr> <td>Tute Go</td> <td>£15.00</td> </tr> <tr> <td>Tute Extra</td> <td>£11.00</td> </tr> </table> <p><u>Private lesson</u> prices (pay per group [12] per lesson, choose your own lesson time)</p> <table> <tr> <td>Learning Programmes</td> <td>£100</td> </tr> <tr> <td>Tute Courses</td> <td>£4,975*</td> </tr> <tr> <td>Tute Go</td> <td>£90.00</td> </tr> <tr> <td>Tute Extra</td> <td>£70.00</td> </tr> </table> <p>*Price for up to 5 students, additional students at £995/student up to a maximum of 10.</p>	Tute Virtual School	£11.00	Tute Courses	£20.00	Tute Go	£15.00	Tute Extra	£11.00	Learning Programmes	£100	Tute Courses	£4,975*	Tute Go	£90.00	Tute Extra	£70.00
Tute Virtual School	£11.00																
Tute Courses	£20.00																
Tute Go	£15.00																
Tute Extra	£11.00																
Learning Programmes	£100																
Tute Courses	£4,975*																
Tute Go	£90.00																
Tute Extra	£70.00																
Accreditation/ qualifications	<p>Tute Courses KS4 – KS5 offer a choice of subjects with Tute teaching the whole specification in either one or two years. Please contact us to check availability of specific subjects and preferred teaching time frames.</p> <p>Functional Skills Level 1 & 2: English, maths</p> <p>GCSE: English Language, English Literature, Mathematics, Combined Science Trilogy, Double Award Science, Single Award science, ELC Science, French, Spanish, German, Religious Studies, History, Geography, Business, Psychology, Sociology, Travel and Tourism</p> <p>A Levels AS and A Level: Accounting, Ancient History, Biology, Chemistry, Classical Civilisation, Economics, English Literature, Film Studies, French, Further Maths, German, History, Law, Mathematics, Media Studies, Physics, Psychology, Religious Studies, Sociology, Spanish.</p> <p>Tute is not a registered exam centre. The responsibility for exam arrangements and all related administration lies with the commissioner of our courses.</p> <p>If the subject you require isn't listed above, please contact us to check on availability. Our team of teachers and subject expertise is always growing.</p>																
Pupil to Staff Ratio	12:1 except for courses when the pupil to staff ratio is reduced to 10:1																
Key Stages	Key Stage 1 to 5																
Registered school	No																
Cost	<p>£33.00 per day for the Tute Virtual School if all subjects are taken.</p> <p>The daily cost can be higher or lower depending upon the product chosen and the frequency of lesson delivery.</p>																

U-NEEK Learning Ltd
4a Druid Street
Hinckley
Leicestershire, LE10 1QH

Tel: 01455 234611

Email: sandie@u-neeklearning.org



<p>Type of Setting</p>	<p>U-NEEK learning aims to create flexible, individualised programmes of learning support for children and young people who, for a variety of reasons, are unable to access mainstream education. From the point of referral, we focus on the special educational needs and disabilities (SEND) of the learner and on family support, in order to provide the most effective and appropriate educational intervention.</p> <p>We specialise in emergency, short, medium and long-term education placements of young people with SEND including (but not limited to) Autistic Spectrum Disorder, Emotional Behavioural Difficulties, challenging behaviour and mental health difficulties.</p> <p>U-NEEK Learning has established excellent partnership working relationships over the past 3 years with a variety of Warwickshire Schools, as well as, the East, North and Central Area Partnerships. Although we are situated some distance from the Southern Area Partnership- we have been asked on numerous occasions to set up a provision close by - which is testament to the exemplary service we offer.</p> <p>Our overall aim is to reintegrate learners into suitable, long term education. To achieve this, U-NEEK Learning provides a more informal and nurturing approach to teaching and learning where dedicated tutors develop a close working relationship with the learners and their families.</p> <p>U-NEEK Learning takes the health and well-being of all our pupils very seriously, therefore we increase awareness and knowledge through PHSE and PSD lessons.</p> <p>In addition to the KS3/ 4 Maths & English curriculum we offer, student can achieve a range of accredited qualifications.</p>
<p>Provision Offered</p>	<p>Functional Skills English (NOCN) Level 1 & 2 Functional Skills English (NOCN) Entry 2 & 3 Functional Skills Maths (NOCN) Level 1 & 2 Functional Skills Maths (NOCN) Entry 2 & 3 Sport and Active Leisure Award, Certificate & Diploma (BTEC) Level 1 Sports Leaders (Sports Leaders UK) Level 1 EAL Certificate in Bicycle Maintenance (EAL) Level 2 Vocational Studies Award - Catering (NOCN) Level 1 Vocational Studies Award – Hair and Beauty (NOCN) Level 1 Basic Food Hygiene (City & Guilds) Level 1 Bronze Arts Award - Computer Aided Design Course (Arts Award UK) Level 1</p>
<p>Accreditation/ qualifications</p>	<p>(see above)</p>

Pupil to Staff Ratio	2 pupils: 1 staff or 4 pupils: 1 staff (depending on provision being delivered)
Key Stages	Key Stage 3 and 4
Registered school	No
Cost	£64.99 per day

Type of Setting	<p>We are an independent special school which operates two schools, one in Birmingham and the other in Nuneaton.</p> <p>Our mission is to improve quality of life for young people through values-based education. Values Academy's principles are respect, courage, honour, compassion and integrity.</p>
Provision Offered	<p>We provide an alternative to mainstream education for young people aged 11-19 who are at risk of social exclusion due to a co-morbidity of disorders or social, emotional and behavioural difficulties. We work with our young people to help them build self-esteem, empathy and a sense of community – without those things, academic achievement will be difficult if not impossible</p>
Accreditation/ qualifications	<p>GCSE English Language, English Literature, Mathematics, Sciences, Art & Design</p> <p>Level 1 & 2 qualifications in English, Preparation for working life, Entry Level English, Mathematics, Science, PSE</p> <p>ASDAN</p> <p>Other qualifications taught on-site by Blue Whale digital media delivery to include Music Technology, Graphics, 3D Design, Photography, Video Production and possibly Games Design/Animation which will then enable the students to progress through the Entry, Level 1 and Level 2 depending on learner engagement and achievement.</p>
Pupil to Staff Ratio	3:1
Key Stages	Key Stage 3 and 4
Registered school	Yes
Ofsted Grade	Nuneaton School received a 'Good' judgement by Ofsted, July 2018.
Cost	£76.00 per day

Leamington Spa College
Warwick New Road
Leamington Spa
CV32 5JE

Moreton Morrell College
Moreton Morrell
CV35 9BL



WARWICKSHIRE
COLLEGE
GROUP

Rugby College
Technology Drive
Rugby
CV21 1AR

Warwick Trident College
Poseidon Way
Warwick
CV34 6SW

Tel: 01926 884820

Email: c.gately@warwickshire.ac.uk

Type of Setting	<p>Warwickshire College Group is proudly in its 20th year delivering courses for 14-16 year old students. Alternative Provision programmes are offered to meet the needs of those students who are at risk of schools exclusion or lacking in motivation and engagement. These accredited courses not only offer a stepping stone into post-16 study but also raise student's self-esteem, motivation and aspirations.</p> <p>All courses have minimum entry requirements. Learners will be expected to meet these requirements and attend an interview in order to access these courses.</p>
Provision Offered	<p><u>Leamington Spa</u> Introduction to Hair and Beauty, Prince's Trust Achieve (Personal and Social Development Level 1), Positive Choices (Workskills Level 2), Functional skills English and Maths and Basic Construction Skills.</p> <p><u>Moreton Morrell</u> Basic Construction Skills, Horticultural Skills and Animal welfare.</p> <p><u>Rugby</u> Basic Construction Skills, Prince's Trust Achieve (Personal and Social Development Level 1), Functional skills English and Maths, Introduction to Motor Vehicle Studies and Introduction to Hair and Beauty.</p> <p><u>Warwick</u> Introduction to Motor Vehicle Studies.</p>
Accreditation/ qualifications	<p>Accredited qualifications can be offered on all programmes based upon student need. All places will be offered following interview and attendance at a taster session.</p>
Pupil to Staff Ratio	<p>12:2</p>
Key Stages	<p>Key Stage 4</p>
Registered school	<p>No</p>
Cost	<p>£84.50 per day</p>

Q. Glossary

Academy	A publicly funded independent school, outside LA control, with the ability to set their own pay and conditions for staff, freedoms around the delivery of the curriculum, and the ability to change the lengths of terms and school days.
Area Behaviour Partnership (ABP)	Groups of secondary schools working together to address issues of behaviour and exclusion
CLM	Collaborative Learning Manager:- a secure on-line learner management system which gives learning providers the ability to monitor learner attendance and progression.
Commissioning	The strategic activity of assessing needs, resources and current services, and the development of a strategy to make best use of available resources to meet identified needs. Commissioning involves the determination of priorities, the securing of appropriate services and their evaluation, review and continued development.
Commissioner	The commissioner may be a secondary school/academy or the Area Behaviour Partnership or Warwickshire County Council (WCC).
DFE	Department for Education
Education Health Care Plan (EHCP)	A plan for children/young people who have identified special education needs and/or disabilities.
Fixed term exclusion	Exclusion from school for a specified period (up to a maximum of 5 days at any one time), with a date given for his/her return to school. Headteachers may exclude a Learner for up to 45 school days in any school year.
Learner Information Form	Application form used by commissioners when applying for Alternative Provision. Appendix C
Individual Learning Plan	Plan showing targets and progress of the individual pupil.
Individual Learning Programme	Programme showing the courses of study to be delivered to the individual pupil.
Learning Passport	Academic tracker and target setting document. Appendix D
In-Year Fair Access Protocol	Agreement on the procedures for transferring pupils at risk of exclusion between schools

Lead professional	The person responsible for coordinating the actions identified in the Early Help assessment process and the single point of contact for children with a range of needs, who is supported by more than one practitioner.
Managed transfer	A pupil transferring from one school to another in order to avoid permanent exclusion
Permanent exclusion	The permanent removal of a child from a school roll.
RISE (CAMHS)	Emotional well-being and Mental Health Services for children and young people.
State School	Otherwise known as publicly funded schools and attended by more than 90 per cent of Learners. Parents do not pay any fees.
WCC	Warwickshire County Council.
ESFA	Education and Skills Funding Agency
Young people /Pupil	Throughout this document the term young people/pupil is used to describe those of statutory secondary school age (11-16 yrs)

CALL OFF CONTRACT

INDIVIDUAL PLACEMENT AGREEMENT FOR SECONDARY PHASE LEARNERS IN ALTERNATIVE EDUCATION PROVISION

1) TERMS OF AGREEMENT

1.1 This is an Agreement made on (insert date):
between:

(1) Council/School name: (insert details)
Address:

and

(2) Provider name: (insert details)
Address:

1.2 This Agreement comprises this document together with the following:
Alternative Education Provision Framework Agreement Terms and Conditions
Schedule 1 to the Alternative Education Provision Framework Agreement (the Service
Specification)
Annex 1 Performance Reporting.

1.3 In the event that there is any conflict between the documents comprising this agreement clauses 1.10
and 1.11 of the Framework Agreement terms and conditions shall apply.

2) PROGRAMME:

2.1 Individual Learner (Insert name):

2.2 Year Group:

2.3 The Provider will provide education on and between the following dates:

Start date:

End date:

No. of weeks:

2.4 The Provider will provide provision at the following times each week:

Mon

Tue

Wed

Thu

Fri

No. of Hours per day-

No. of hours per week-

2.5 The agreed Provision/Programme is set out below:

Description of course(s)
(eg. English)

Expected Accreditation
(eg. GCSE)

2.6 Any deviation from the agreed qualification(s) listed in 2.5 (above) above must be an accredited qualification on the QCF and must be agreed with the commissioner/School Representative prior to delivery to the Learner, such agreement not to be unduly withheld or delayed.

3) FINANCE:

3.1 The Council/School agrees to pay the Fee to the Provider in return for the provision of the Services by the Provider. The Total Fee is (insert fee) £ for the period stated above in section 2.3/4/5.

**Delete 3.2 if not applicable*

3.2 The Fee is subject to a retention of a Performance Related Payment (PRP) of 10% of the total fee. The PRP will only be payable following achievement of the following targets:

(Please insert specific targets to which PRP applies)

-
-
-

3.3 The Fee less any PRP retention will be paid pro rata monthly in arrears within 30 days of receipt of an invoice, in accordance with the Schedule for Payment below.

Schedule for Payment

Period (month)

Invoice Value

Invoice date

4) LOCATION OF PROVISION

Insert address details

5) REPRESENTATIVES OF EACH PARTY

Council/School Representative	
Authorised Representative (name)	
Post held:	
Tel no:	
E mail:	
Provider Representative	
Nominated Representative (name)	
Post held:	
Tel no:	
E mail:	

6) AUTHORISATION:

Authorised to sign for and on behalf of the alternative provider

Name (print):

Signed by:

Position:

Date:

Authorised to sign for and on behalf of Council/School

Name (print):

Signed by:

Position:

Date:



Working in partnership, celebrating success, aiming for excellence'